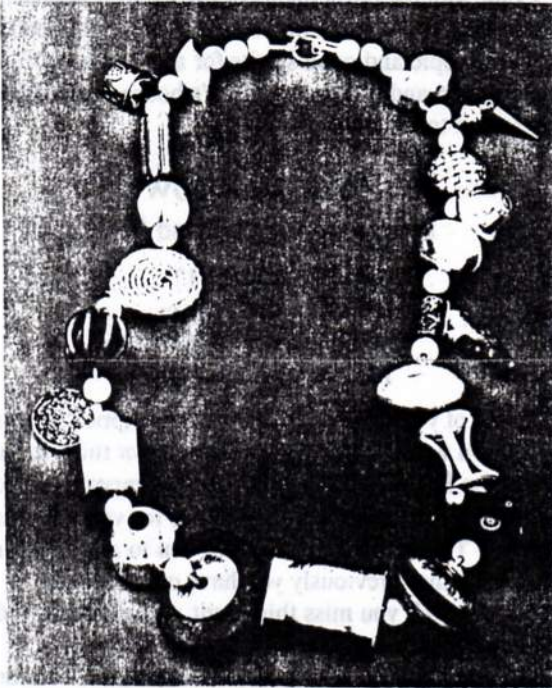


# SEATTLE METALS GUILD

Bi-Monthly newsletter

September-October 1995



This is the 1995 Pratt Auction necklace made by Seattle Metals Guild members. Copies of the color slide are available. See page 7. Photo by Richard Nicol.

## BI-ANNUAL MEMBERS' SHOW

- Deliver Work:** Saturday, September 16  
at Jennifer Paris' house, 10 a.m.-1:00 p.m.  
6557 2nd Ave. NW, Seattle
- Show Dates:** October 1 - December 31, 1995
- Opening:** Friday, October 20, 1995, 6-8 p.m.  
- 6:00 p.m. - 8:00 p.m.
- Location:** WA State Convention and Trade Center  
8th and Pike, Seattle
- Pick up work:** Saturday, January 6, 1996  
at Jennifer Paris' house, 10 a.m.-1:00 p.m.
- Contact:** Allora Doolittle, 868-3443

This will be a non-juried show of our members' work. Each member may submit up to two pieces. Both or just one piece per person may be displayed, depending on the overall quantity and sizes of work submitted. Please indicate your preference for which piece you would most like shown.

When you drop off your work, be sure to supply an artist's statement (no more than 30 words), title, value and materials used to accompany each piece. If hand delivery is impossible, please contact Frances Smersh at 933-6606.

The opening will coincide with activities of the Jewelry/Metals Symposium.

The Convention Center receives a lot of foot traffic, so get those pieces ready to show Seattle natives and visitors what you've got. Work can be for sale, but is not required.

## SMG Calendar

|                    |   |      |
|--------------------|---|------|
| Sept. 15           | General Meeting and Lecture - FREE              | p. 1 |
| Sept. 16           | Drop off work for <i>Bi-Annual Show</i>         | p. 1 |
| Oct. 1-<br>Dec. 31 | <i>Bi-Annual Members' Show</i> - FREE           | p. 1 |
| Oct. 10            | Newsletter deadline                             | p. 8 |
| Oct. 13            | Lecture: <i>Charon Kransen</i> - FREE           | p. 2 |
| Oct. 14, 15        | Workshop: <i>Charon Kransen</i>                 | p. 2 |
| Oct. 15            | Potluck at Marcia Bruno's - FREE                | p. 2 |
| Oct. 17            | Trunk show of European jewelry and books        | p. 2 |
| Oct. 20            | Opening for <i>Bi-Annual Show</i> - FREE        | p. 1 |
| Oct. 20, 21        | <i>Jewelry and Metals Symposium</i>             | p. 3 |
| Nov. 9             | Lecture: <i>Marketing Your Work</i> - FREE      | p. 3 |
| Nov. 11            | Women's Shelter Work Day                        | p. 3 |
| Nov. 12            | Women's Shelter Work Day                        | p. 3 |
| Nov. 16            | Library Open House - FREE                       | p. 2 |
| Dec. 1-3           | ( <i>Seattle Sampling</i> )                     | p. 5 |
| Dec. 10            | Christmas Party/Ornament Swap-FREE              | p. 4 |
| Jan. 6             | pick up your work from<br><i>Bi-Annual Show</i> | p. 1 |
| Jan. 20, 21        | Workshop: <i>Mary Ann Scherr</i>                | p. 3 |

## GENERAL MEETING AND LECTURE

- Date:** Friday, September 15  
**Time:** 7:00 p.m.  
**Location:** Phinney Ridge Community Center  
Building A, Room 6  
6532 Phinney Ave. N., Seattle

Ramona Solberg will be the guest lecturer at this fall's general meeting. She will speak on how she incorporates her travels in her work. Both the lecture and general meeting are free and open to all members. Contact Jonathan Briggs or Karen Boulton at 362-5055 with any questions.

Thank you *all* for paying your membership dues in such a timely fashion. It is greatly appreciated.

☺ ! - the Board

