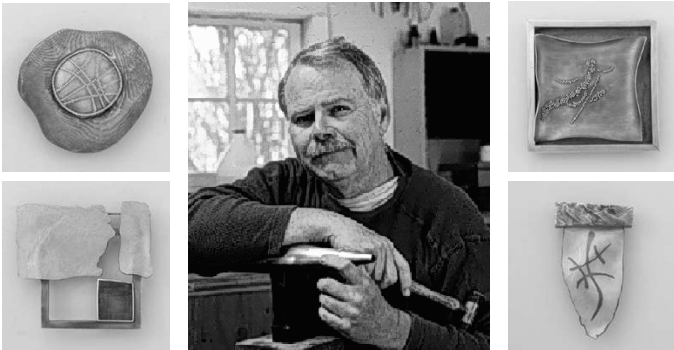


## WORKSHOPS

### SURFACE EMBELLISHMENTS *with Harold O'Connor*



Date: Saturday and Sunday, March 19th & 20th  
 Time: 9:00 am - 5:00 pm  
 Place: North Seattle Community College, 9600 College  
 Way North, Seattle, WA 98103  
 Cost: \$150.00

Lecture: Friday, March 18th, **FREE**  
 Time: 7:00 pm  
 Location: NSCC (*map at [www.northseattle.edu/maps/](http://www.northseattle.edu/maps/)*)

Harold was educated in goldsmithing techniques in Denmark, Finland, Germany and Austria, and holds a degree in Anthropology from the University of New Mexico, as well as an MFA from Instituto Allende in Mexico. He has authored several books, including *The Jeweler's Bench Reference*, and his work is included in prestigious collections throughout the U.S. and Europe: The Metropolitan Museum of Art in NYC, the Boston Museum of Fine Arts, Goldsmith's Hall in London, and the Renwick Gallery of the Smithsonian Institute. This man is not only one of the top designers, but is also one of the most knowledgeable masters of the goldsmithing craft working today; he works his gold from the bullion stage, smelting, alloying, rolling, drawing, forging, annealing, and fabricating each one-of-a-kind piece himself. In this workshop students will learn various techniques to enhance metal surfaces, covering metal embossing, creasing and folding, reticulation of silver, lamination of 24K to silver and the manipulation of this alloy, and gold and silver granulation. Efficient workshop methods will be discussed, as well as multiple uses of the flexshaft. Supply kits will be available for \$40.00 each.

As one of the world's foremost studio jewelers, Harold describes his work as follows: "I have always been interested in contrasts of color and texture, and enjoy learning new techniques to work metals. Although I am often reminded that my works are sculptural in nature and would be well-received in a larger scale, I am happy with the size of my works. To me they are little worlds within a landscape. My ideas come from my various world travels, the environment and observations of society."

**PLEASE NOTE: Do NOT write or send checks to North Seattle Community College; make them payable to SMG and remit to address on registration form. Thank you!**

## FAREWELL AND THANKS!

### Goodbye Dana and Carolyn!

It is with much gratitude that we extend farewells to two of our most committed and hard-working members: Dana Carlson and Carolyn Sealfon. Dana began her varied stint as a General Board Member three years ago, then bravely picked up the baton as Newsletter Editor, later becoming our Publicity Specialist. Her insight and wonderful layout skills will be sorely missed! Carolyn served our membership above and beyond the call of duty, carrying several titles through her five-year participation. Most recently acting as Vice President and more actively as Workshop Coordinator, Carolyn has developed some great learning opportunities for Guild members; she also keeps us equipped with inspirational quotes (see below), and aids our countrymen in times of need (see Member News).

We will miss these fabulous ladies at our meetings, but hope to see them often at Guild events; thank you both very much!

### BE BRAVE ENOUGH TO LIVE LIFE CREATIVELY

*The creative is the place where no one else has ever been. You have to leave the city of your comfort and go into the wilderness of your intuition. You can't get there by bus, only by hard work and risk and by not quite knowing what you're doing. What you'll discover will be wonderful. What you'll discover will be yourself. --Alan Alda*

## EVENTS CALENDAR

DATE	EVENT	PAGE
March 3	Nancy Worden Opening	3
March 5-6	Kingco Rock Show	2
March 10	Lecture Series: Seymour Rabinovitch	2
March 12-13	Pratt Jewelry Repair Days	2
March 18	Harold O'Connor Lecture	1
March 18	Lark Book Submission Deadline	4
March 19	Passing The Torch Deadline	5
March 19-20	Harold O'Connor Workshop	1
March 25	SMG Necklace Bead Deadline	4
April 1	Passing The Torch Opening	5
April 14	Lecture Series: Jana Brevick	2
April 17	Enameling Workshop/Teachers	5
May 5	In Our Own Image Preliminary Deadline	5
June 22-25	SNAG Conference	3
July 23	In Our Own Image Final Deadline	5
July 23	Swap Meet at Pratt Fine Arts	5

## LECTURE SERIES

### GOING LOCAL: The 2005 Lecture Series

The momentum is strong, the lectures have been outstanding... don't miss these remaining lectures by two local favorites, Seymour Rabinovitch and Jana Brevick!

Dates: Second Thursdays in March and April  
Time: Doors open at 6:30 pm, lectures begin at 7:00 pm  
Place: Bertona Room #3  
Seattle Pacific University  
3307 Third Avenue  
Seattle, WA 98119  
Cost: Free for members, \$5 suggested donation for non-members

An online map can be found at [www.spu.edu/info/maps/index.html](http://www.spu.edu/info/maps/index.html).

#### March 10 SEYMOUR RABINOVITCH

##### STERLING SILVER: SOME TECHNICAL AND AESTHETIC ASPECTS



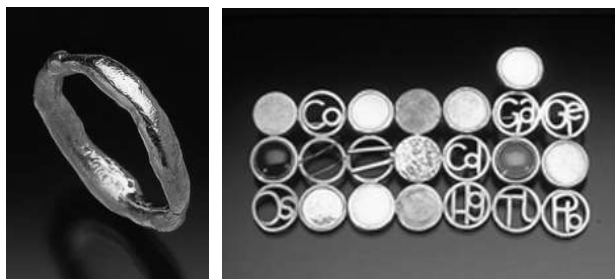
*Technical:* What is sterling? Is it a unique substance? How do metalsmiths modify its nature in working with it?

*Aesthetic:* Style and Form in object design are illustrated by an examination of the evolution of the broad-bladed silver server over the years 1700 to 2000, with special emphasis on contemporary work of the last fifteen years.

Professor Benton Seymour Rabinovitch is Professor Emeritus of Chemistry at the University of Washington; he is a Fellow of the Royal Society (London), a member of the American Academy of Arts and Sciences, and a member of the Silver Society (London). He is the author of *Contemporary Silver: Commissioning, Designing, Collecting, and Antique Silver Servers for the Dining Table: Style, Function, Foods, and Social History*.

#### April 14 JANA BREVICK

##### INVESTIGATING JANALAND: FIELD GUIDE FOR UNDERSTANDING THE THOUGHT PATTERNS AND RESULTING OBJECTS OF JANA BREVICK



In this lecture we'll look at the work Jana has done since university; she will give an explanation of the different series she has begun and continues to develop, and the different activities and groups in which she participates, later discussing how these experiences are affecting her work. Her influences will also be illuminated. This will basically be a journey through Jana's innovative work, with some fun thrown in when appropriate (always...!).

[www.seattlemetalsguild.org](http://www.seattlemetalsguild.org)

## VOLUNTEER

### Women's Shelter Jewelry Project Clean and Repair Days

The first goal of the project was to collect jewelry: jewelry that was sitting in the dark, in women's jewelry boxes, all over the city. That has been accomplished.

The next goal of the project was to get it all sorted--that has been accomplished, and all pieces that did not need repair or cleaning have been distributed to local women's shelters and the *Dress for Success* program at the YMCA.

The final phase is to clean and repair the remaining jewelry, which is where you come in...we hope you can come!

Saturday and Sunday, March 12th & 13th, 10:00 am to 4:00 pm

#### LUNCH PROVIDED

Pratt Fine Arts Center  
1902 South Main Street  
Saturday and Sunday, March 12th & 13th  
(206) 328-2200

Please RSVP via email: [mickilippe@comcast.net](mailto:mickilippe@comcast.net)

Questions, please call Micki Lippe at (206) 328-2479

## EVENTS

### Studio Tour and Potluck Party

It's time once again to clear your calendars for this summer's Studio Tour and Potluck Party! The second weekend in June, we'll be traipsing about our fair city to take a gander at the stunning workspaces of a few of our West Seattle smiths...it's always a delightful foray, one you won't want to miss!



Details to follow in next month's newsletter.

### East Kingco Rock Club Show

Saturday and Sunday, March 5th & 6th, 10 am to 5 pm

Located at Pickering Barn, 1730 10th Avenue NW, Issaquah, WA, across from Costco. From I-90 East, take exit 15, go north to 10th Avenue NW. From I-90 West, take exit 17, go north to SE 56th Street, then west to 10th Avenue NW...free admission and parking!

Choose from a good variety of cut gems, cabochons, minerals and crystals, and gemstone beads.

(continued next page)

## EVENTS, CONT.

### 2005 SNAG Conference: *Intersection* in Cleveland, Ohio

The 2005 SNAG Conference, *Intersection*, co-hosted by the Cleveland Institute of Art and Kent State University, will be held June 22-25, 2005 at the Sheraton Cleveland City Centre. The conference program and exhibitions will address the intersection of the disciplines of jewelry, metalsmithing, and enameling with others including industrial design, the fine arts, and fashion. Intersections will be examined in the context of culture, history, and technology.

Keynote speaker, renowned Dutch designer Gijs Bakker, will discuss the dynamic intersection between Craft and Design. Bakker will use examples from his 40-year career to illustrate his opinions on the theme.

Bakker will be joined by David McFadden, addressing the changing horizons of art and design; Kathy Buszkiewicz, discussing her work; Gretchen Goss and Maria Phillips, continuing their examination of contemporary enamel work; and Gregory Peckham, exploring the role of the artist in public art. Also scheduled are Dr. Howard Risatti, positing various theories on how people understand and recognize objects through craft and design; Melvin Rose, presenting an overview of the evolution of decorative metal work in Cleveland's residential and public architecture over the last 150 years; and Dr. Lynese Williams, examining the ways in which hip-hop jewelry has become a cultural phenomenon.

Two panels join the lineup for 2005. *Theory and Practice: A Dialogue Between Educators and Practitioners*, featuring Myra Mimiłtsch Gray, Joe Wood, Marcia Macdonald and Jan Yager, will be moderated by Metalsmith editor Suzanne Ramljak. *The Price of Gold*, a group of environmental experts discussing their efforts to reform current gold mining practices, will be moderated by metalsmiths Susan Kingsley and Christina Miller.

*The Annual Juried Student Slide Show*, organized by UW graduate Lanelle Keyes and Kim Tatalick of Savannah College of Art & Design, will showcase current student work.

As always, an impressive selection of juried and curated exhibitions will run concurrently with the conference. Among the ten shows lined up for 2005 are *The Influence of Rock and Roll* (at the Rock & Roll Hall of Fame and Museum), *Resources: Steel, Rubber, Coal and Salt*, *Considering Installation: Artists Working with Enamel*, *200 Rings*, *Virtual/Tangible*, *Educators/Educated: Jewelry and Metals in Ohio*, and *On the Verge: SNAG Student Exhibition*.

Conference registration brochures will be mailed with the Winter 2005 issue of *Metalsmith*. Conference details and online registration will also be available through SNAG's website ([www.snagmetalsmith.org](http://www.snagmetalsmith.org)) in mid-January. For questions about the conference, contact Conference Director Kristin Shiga at (503) 329-2352 or [snagconference@juno.com](mailto:snagconference@juno.com). For conference registration and hotel reservations contact Complete Conference Coordinators, (630) 637-8100, or [info@cccmeetings.com](mailto:info@cccmeetings.com).

### Artists and Bead Enthusiasts!

Rings & Things is coming to your area in April as part of our 2005 National Bead Show Tour! Our shows are wholesale and by invitation only, so be sure to bring your tax ID and a copy of this newsletter for entry...

Come marvel at our tables piled high with literally thousands of strands of beads: gemstone, pearl, sterling, African trade and more. These are special limited-quantity items that aren't in our catalog, and we sell them for 15% off regular wholesale price. We also bring a selection of our regular stock items, at regular

price as seen in the catalog: findings, Swarovski® crystal, stringing supplies, books and much more.

In addition, with our complete sample-card display, you can place an order from the show for any items we don't bring on the road with us. If you spend \$100 or more, we'll provide free shipping on the order. For info visit [www.rings-things.com/show.htm](http://www.rings-things.com/show.htm).

Mt. Vernon, WA April 16, noon to 4 pm  
Skagit County Fairgrounds, Bldg. C  
1410 Virginia St.

Seattle, WA April 17, 1 pm to 5 pm  
Seattle Center, Snoqualmie Room  
305 Harrison St.

Bellevue, WA April 23, 11 am to 3 pm  
Bellevue Community College, Cafeteria  
3000 Landerholm Circle SE

## MEMBER NEWS

### Nancy Worden: *Modern Artifacts*

2004 Central Washington University *Distinguished Alumni Award* recipient--and SMG Educational Outreach Chair--Nancy Worden will be showing a solo exhibition of her work, entitled *Modern Artifacts*, at the William Traver Gallery in Seattle.



Nancy's show opens on March 3rd, with a reception running from 5 pm to 8 pm; show runs thereafter to April 3rd. Gallery hours are Tuesday through Friday from 10 am to 6 pm, Saturday from 10 am to 5 pm and Sunday from noon to 5 pm; the gallery is located in downtown Seattle at 110 Union Street, on the second floor. See you there!

### Your Name Here

The Board of Directors for the Seattle Metals Guild would like to invite you to consider yourselves or your peers as potential candidates for positions on the Board. As we begin our new calendar year, and as new and improved programming unfolds, we are keeping in mind that the fine individuals who have given so much of their time over the past one or more years are planning their next steps in life, and will be moving on from their posts with the Guild. This means that we welcome any interested parties who may want to play a more active role in the Guild...it's a great feeling! If you or anyone you know are interested in finding out more about positions within the Board, please contact Ginger Kelly at [president@seattlemetalsguild.org](mailto:president@seattlemetalsguild.org).

*We won't bite!*

*(continued next page)*

[www.seattlemetalsguild.org](http://www.seattlemetalsguild.org)

## MEMBER NEWS, CONT.

### Workshop Coordinator Carolyn Sealfon: A Hero In Our Midst

Our very own Board Member Carolyn Sealfon was written up in a January issue of the *Kent Reporter*, detailing her humanitarian efforts in storm-torn Florida! Here are some excerpts from the article:

*Carolyn Sealfon considers herself an adventurer. She has travelled the world, experiencing the cultures of places as diverse as India and the far end of the Aleutian Islands. But it was as a Red Cross volunteer in September and October in Pensacola, Fla., that she found herself in the adventure of her life. "I had decided to volunteer with the Red Cross after 9/11," said the Kent resident, "and this seemed like the best opportunity."*

*After completing a series of courses in basic first aid and other disaster relief skills, she was set to help in responding to house fires for the first three years of her service, assisting with temporary shelter, clothing and food for victims. She had never been asked to go more than a short drive from home, until Hurricane Ivan hit Florida in 2004: "After all of the hurricanes, the Red Cross was stretched for people," said Sealfon. "They put out a call nationwide for volunteers. Something like 77 people went from Seattle." It was the largest national call-up for volunteers by the Red Cross since 9/11.*

*Predicting the storm's path made getting to work a sojourn unto itself for Sealfon and other volunteers; re-routed through Houston, Charlotte and Montgomery, her team finally made it to Pensacola, where they were met with devastation. "Sometimes the building fronts would be standing and the rest would be gone," said Carolyn.*

*Arriving in Pensacola in the late evening, the volunteers were given cots to sleep on in front of the Red Cross building, from which Carolyn was able to fashion a makeshift shelter. By day, for the next three weeks and for 14-hour days, she was assigned to an Emergency Response Vehicle, venturing into local neighborhoods with food, water and information on contacting the Federal Emergency Management Agency. "There was no refrigeration and there were piles of rotting food and wet carpets and furniture in front of every house, with no garbage pickup possible."*

*Sealfon came to be a volunteer with no special skills or training. By trade a former executive assistant and now an artist working in metal, she was motivated by wanting to help. The Red Cross reports a need for many different types of volunteers, and they encourage people to go to their website, [www.seattleredcross.org](http://www.seattleredcross.org). Those without internet access can contact Kadie Kozee at 206.726.3566.*

*As for Sealfon, would three weeks of hot days, cold showers, palm beetles and the other discomforts make her think twice if asked again to go far away to help in a disaster? "Absolutely not," she said enthusiastically. "I am ready any time they ask. It is a great feeling to be helping so many others."*

## OPPORTUNITIES

### Call For Artists: Lark Books

Lark Books seeks high-quality color slides, transparencies, or digital images of gorgeous jewelry—of all styles and in all techniques—to publish in *The Complete Book of Making Metal Jewelry* (working title). Scheduled for release in spring 2006, this book will be a complete survey of metal jewelry techniques: applique, carving, chains, chasing, cuttlefish casting, dapping,

[www.seattlemetalsguild.org](http://www.seattlemetalsguild.org)

die forming, enameling, etching, filigree, forging, granulation, kumboo, lamination inlay, marriage of metals, mechanisms, metal clay, mokume gane, repousse, resin inlay, reticulation, riveting, roller printing, solder inlay and stone setting.

**Entries must be postmarked by March 18, 2005.**

For guidelines and entry forms, go to the Lark Books website: [www.larkbooks.com/submissions/ArtistEntryForm-MetalJewel.asp](http://www.larkbooks.com/submissions/ArtistEntryForm-MetalJewel.asp), or send an SASE to Metal Jewelry, Lark Books, 67 Broadway, Asheville, NC, 20081.

E-mail [nathalie@larkbooks.com](mailto:nathalie@larkbooks.com) with any questions!

### Pratt Auction Bead Necklace: Deadline March 25th

We are still looking for beads to include in the Pratt Auction Bead Neckpiece. Each year Seattle Metals Guild members are asked to make and donate a handmade bead that is then incorporated into a neckpiece and donated to the annual art auction at Pratt Fine Arts Center. This highly prized piece brings in a tidy sum to help keep art happening at Pratt! For those of you with great intentions but who tend to procrastinate, (yes...I'm talking to you) NEVER FEAR! THERE IS STILL TIME!



SMG Auction Necklace, 2004

The deadline for bead donations is March 25th, and the theme this year is *ALL NATIONS*, as a tribute to local and national treasure Ramona Solberg, who is an extensive traveler. The invitation to donate beads goes out to ALL GUILD MEMBERS, old and new. We are looking forward to putting together this internationally flavored neckpiece.

**Bead Specifications:** Traditionally most beads have been constructed of silver, gold and copper alloys, with or without other materials (glass, seed beads, bone, other organics). There must be an unobstructed channel to pass through the bead—tubing is recommended—soldered or riveted in place. The hole needs to be 2mm minimum (#45 drill bit). The bead must fit into a one inch square. Please take weight into consideration when making your bead.

The annual auction date this year is May 21st. Beads must be received by March 25th in order to construct, photograph and catalog the neckpiece. Beads can be mailed to and questions directed to:

Kristi Zevenbergen  
2628 - 143rd Place SE  
Mill Creek, WA 98012  
(425) 337-9405  
E-mail: [kristikitsch@comcast.net](mailto:kristikitsch@comcast.net)

### In Our Own Image: An SMG Juried Members' Show

See colored inserts near the end of the newsletter for prospectus and entry form. Details will be available soon on our website at [www.seattlemetalsguild.org](http://www.seattlemetalsguild.org).

## CLASSES

### Teacher Training Workshop: *Enameling Demystified!*

Curious about the ways and wherefores of fusing glass to metal (enameling)? Join Coral for a day of discovery as she discusses the "science" involved in this fascinating art form. After describing several of the traditional techniques such as cloisonné and champlevé, she will show you the different types of enamel and how each is applied to the metal.



You will end the day with hands on projects suitable for the classroom. Many handouts will be provided. This workshop is sponsored by the Seattle Metals Guild and is a Washington State approved clock hour workshop (8 clock hours credit).

**Registration priority will be given to teachers accumulating clock hours, but will be open to anyone wishing to cover the basics.**



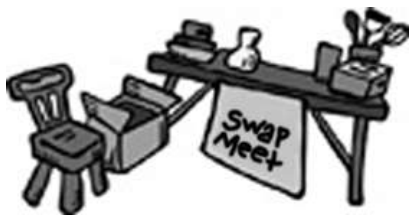
Coral Shaffer has been a practicing enamelist for 30 years. She studied at a cloisonné factory in Kyoto, Japan, and has been teaching enameling since 1991. She co-authored *A Manual of Cloisonné and Champlevé* and is the owner and operator of Enamelwork Supply Co.

North Seattle Community College, Jewelry Studio  
Sunday, April 17th  
10:00 am - 6:00 pm  
\$120.00 + supply fee

Registration: Contact Coral Shaffer at 206-525-9271 or Enamelwork Supply Co., 1022 NE 68th, Seattle 98115  
E-mail: [ewSCO@attbi.com](mailto:ewSCO@attbi.com)

## SAVE THE DATE

### Seattle Metals Guild Swap Meet Cosponsored by Pratt Fine Arts Center



On Saturday, July 23rd, the Seattle Metals Guild and Pratt Fine Arts Center are proud to present the return of the SWAP MEET! This is your chance to discharge your unused and under-loved items: perplexing tools, books you've read a thousand times, usable scrap. The atmosphere will be casual, spontaneous and won't be the same without you and your "extris"...so come on down and let your trash become someone else's treasure! For more info call Hilary Lee at (206) 328-2200 ext. 28, or e-mail her at [hlee@pratt.org](mailto:hlee@pratt.org).

### Master Artist Intensive with C. James Meyer at Pratt Fine Arts Center

You won't want to miss Pratt's Master Artist Intensive with Professor C. James Meyer from the Virginia Commonwealth University; scheduled for August 12th through the 15th, this workshop will be sure to delight and enlighten! More information to come in the next newsletter...save the date!

## LOCAL VENUES

### Bellevue Arts Museum

Bellevue Arts Museum is the Pacific Northwest's center for the exploration of art, craft and design through exhibitions, educational programs and partnerships, emphasizing the work of regional artists. The Museum will open its doors to the public in the spring of 2005 and celebrate a return to its roots of craft and design derived from the Bellevue Arts and Crafts Fair. The new craft and design focus fits well into the cultural arts fabric for the region and will add to the national conversation on craft and design.

Look for these upcoming events--come celebrate with us!

**The Artful Teapot:** *Twentieth Century Expressions from the Kamm Collection*

**Silver in Service**

**Looking Forward Glancing Back:** *Northwest Designer Craftsmen at Fifty*

**TEAlicious:** *A Global Infusion*

**David Chatt:** *Two Hands, Twenty Years and a Billion Beads*

For more information please visit [www.bellevueart.org](http://www.bellevueart.org).

## EDUCATIONAL OUTREACH

### Passing The Torch: Third Annual Statewide High School Metal Arts Exhibition

Sponsored by the Seattle Metals Guild  
Opens Friday, April 1, 2005

Gallery One, 408 N. Pearl, Ellensburg, WA 98926  
(509) 925-2670

The Educational Outreach Committee is pleased to announce that *Passing The Torch 3*, the statewide high school metal arts competition, will again be co-sponsored by the Seattle Metals Guild and Gallery One Art Center in Ellensburg. The opening is from 5-8 pm on Friday, April 1st, with an awards presentation at 6:00 pm that evening. This year's jurors are retired metals professor Anne Graham from Richland, WA and professional artist Ries Niemi from Edison, WA. Prizes are awarded in two categories, jewelry and sculpture, and several teachers will also receive recognition.

Nancy Worden is installing the show again this year and could use help during the jury process on March 19th in Ellensburg, setting up for the opening on April 1st or with striking the show April 30th. If you can volunteer, please contact her by phone at 206-725-1915 or e-mail at [rajbeet@mac.com](mailto:rajbeet@mac.com).

[www.seattlemetalsguild.org](http://www.seattlemetalsguild.org)

## SMG MEMBER GALLERY

Get your own web page! It's easy!

❖Collect three images of your work (slides or digital images), an artist's statement of up to 500 words, and any contact information you'd like to include: address, phone number, e-mail address, gallery, or personal website address.

❖Submit your information via e-mail to: [matthew@sites4artists.com](mailto:matthew@sites4artists.com); or by U.S. mail: sites4artists, attn: Matthew, 5202 -21st Ave. SW, Seattle WA 98106

❖Send a check for \$40 (denote in memo field that it's for your web page) made payable to Seattle Metals Guild to: Seattle Metals Guild, 1426 Harvard Ave., #154, Seattle WA, 98122.

For more information please visit our website at: [www.seattlemetalsguild.org](http://www.seattlemetalsguild.org)

## MARKETPLACE

### SEEKING POSITION

Recent graduate of Revere Academy's Jewelry Technician program with one year+ experience in fabrication is looking for FT or PT position as a jeweler's assistant in the Seattle area. Have good work ethic and am eager to learn trade. Resume w/samples and refs available upon request. Call Katherine at 206-325-9201.

### SEEKING APPRENTICESHIP

I'm a first-year silversmithing student/aspiring jeweler looking to expand my knowledge of silversmithing with a part-time apprenticeship. Ideal position would provide training in all areas of jewelry fabrication. Skills include soldering, stone setting, forging, and polishing, plus attention to details, hard working, and eager to learn. Please contact [vjg206@yahoo.com](mailto:vjg206@yahoo.com).

### HANDCRAFTED DESIGNER CABOCHONS AT V&O LAPIDARY

Select from our broad assortment of beautifully styled and finished cabochons, or let us custom design for you from our extensive stock of raw materials. Call Bon Vernarelli & Larry Ostler at (206) 364-9278. Located in N. Seattle. [vo\\_lapidary@msn.com](mailto:vo_lapidary@msn.com).

### BENCH SHEAR FOR SALE

Diacro 24" pull down. Good shape. Asking \$600.00. Call Andy Cooperman (206) 781-0648, e-mail [gembay@wolfenet.com](mailto:gembay@wolfenet.com).

## RESOURCES

**danaca design**  
Metal Crafting Center and Gallery  
5619 University Way NE, Seattle 98105

The Metal Crafting Center is an increasingly well-equipped, 8-bench, nonferrous metal fabrication studio. The space is a teaching facility with a quarterly schedule of classes and workshops. It is also available for hourly bench or studio rental (current open blocks are Mon. & Thurs. 6 pm - 9 pm, Fri. 3 pm - 6 pm, Sun. 1:30 pm - 4:30 pm; call for orientation schedule and rental rates). Included in the space is a store front gallery representing local artists who incorporate metal into their work. For more information contact Dana at (206) 524-0916, or e-mail her at: [danacadesign@hotmail.com](mailto:danacadesign@hotmail.com)

## The Alchemist's Casting Shop

Seattle, WA 98126 (206) 933-9255  
[the-alchemist@comcast.net](mailto:the-alchemist@comcast.net)

High quality production casting services in platinum, gold, silver, bronze. RTV, vulcanized silicone and rubber molds. Metal fabrication, wax carving to specifications. Visa/MC accepted. Call for a free consultation.

## SCHOOLS

**Oregon College of Art and Craft**  
8245 SW Barnes Rd., Portland OR 97225  
(503) 297-5544  
[www.ocac.edu](http://www.ocac.edu)

**Pratt Fine Arts Center**  
1902 South Main Street, Seattle 98144  
(206) 328-2200

Pratt Fine Arts Center, Seattle's premier studio for the visual arts, provides unparalleled opportunities to artists in its world-class studios for glass, sculpture, jewelry, metalsmithing, painting, drawing and printmaking. Courses and workshops are available for beginning as well as advanced students. Open lab times are available for independent artists during the week and on many weekends. Please call for a full schedule and a registration packet.

**North Seattle Community College**  
9600 College Way North, Seattle (206) 527-3600  
<http://nsccux.sccd.ctc.edu>

The Seattle Community College system offers jewelry design and light metal fabrication at its North campus. The facilities are some of the best in the country with torches at every bench, and all the necessary hand tools needed to construct fine jewelry. The studio has designated hot and cold working areas for metal fabrication, and a complete casting set-up for gravity and centrifugal processes. The sheet metal equipment includes a metal shear, box brake, metal lathe, and milling machine, which can be used for tool-making and metal construction. There is also basic lapidary equipment available for stone cutting and polishing. For more information, contact Lynne Hull at (206) 526-0062 or the Humanities department at (206) 527-3709.

**South Seattle Community College**  
6000 16th Avenue SW, Seattle 98106  
(206) 764-5352

South Seattle Community College remains the best-kept secret in the greater Seattle area. Craftspersons of every discipline are delighted to discover that the finest educational welding fabrication facility (possibly in the universe) welcomes both vocational and recreational students. We got the stuff! Make time to drop in on us. Calling ahead is best, but you're OK to stop by anytime. We are in session Monday through Friday, 7 am to 12 pm, and Monday/Wednesday or Tuesday/Thursday evenings. Call John Todd at (206) 764-5352, (206) 764-5394 (work) or (206) 283-5069 (home). E-mail to [jtodd@sccd.ctc.edu](mailto:jtodd@sccd.ctc.edu).

**Bellevue Community College**  
3000 Landerholm Circle SE, Bellevue, 98007-6484  
(206) 641-2263

Bellevue Community College offers classes and workshops in Jewelry and Metalsmithing at affordable prices. View our website at <http://www.bcc.ctc.edu>. Click on Continuing Education, then ARTS.

# In Our Own Image Juried Metals Show & Sale Information & Entry Forms

Sponsored in part by The Seattle Metals Guild, this show invites all Guild members and special guests, with a focus on Western Washington, to display their skills and perhaps make some sales! An expanded version of this information page will soon be found online at [www.seattlemetalsguild.org](http://www.seattlemetalsguild.org).

Who can enter: Any paid-up Guild member can participate and invite one non-member metalsmith to also enter from two to six pieces, each of which must contain at least some metal. Special consideration will be given to non-members who are enrolled in metals programs, high school level or higher. The Guild will contact instructors throughout Western Washington about options to include their students.

Sales Commission: At least half of all entered pieces must be for sale with the split being 70% for the artist and 30% for the gallery. Read below in *More about Sales* on chances for multiples sales.

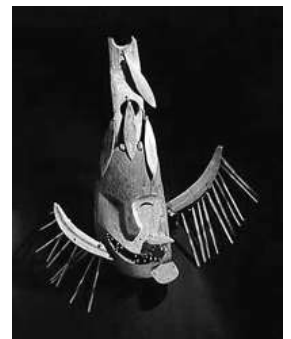
Insurance: The show sponsors will carry insurance only on pieces for sale at their wholesale value while artists submitting works not for sale will be responsible for their own coverage of just those pieces. You can read more about this show on pages 4 and 5 of the Jan/Feb SMG newsletter, and also online at [www.seattlemetalsguild.org](http://www.seattlemetalsguild.org).

Dates & Location: Opening August 4, 2005, and wrapping up in late September, our show will be at Ancient Grounds Gallery, 1220 First Avenue, (downtown) Seattle, WA 98101, (206) 749-0747.

Juror & Theme: The juror is the owner of Ancient Grounds and long-time metalsmith, Roland Crawford. He'll be looking for all entries to pay homage, in some creative way, to the show theme: the most important visual image we interact with every day, the human face. Read below for more details on the scope of the theme and on what the juror is looking for.

Submission Deadlines: We're planning color ads in gallery magazines, color postcard mailers and other published materials, so to be included in the most important promotional photography, the deadline is.....May 5, 2005  
Of course the juror will tolerate other entries for local ads, newspaper, etc. by.....June 18, 2005  
Deadline for works to be included in August opening.....July 23, 2005  
Unsold works earmarked for other shows can be picked up or shipped by.....September 30, 2005

More about Sales: Let's say one of your pieces sells on opening night. It will then stay in the show for the next six to seven weeks with a sold sign on it. This may discourage additional sales unless we can work together to offer another buyer an edition of the same piece or something else slightly different yet just as good. Ancient Grounds wants to allow this show to be a positive and on-going business experience for the participants rather than just a 'flash in the pan' for the first week. Therefore we shall encourage participants to: leave photos of selected works during the show, produce editions of a successful design for multiple sales, take a piece back for repair or improvement, even enter a great new piece in early September because you got inspired by a different entry seen earlier in the show. There re too many individual situations to address in this prospectus so the juror hopes to hear from each participant on their special needs and ideas if any.



## *In Our Own Image* Receipt For Submitted Pieces

Bring in this sheet, or send it, with pieces...we'll copy it and return the original to you!

Submitting Artist's NAME: \_\_\_\_\_

Best Contact/Shipping ADDRESS: \_\_\_\_\_

Best Contact PHONE NUMBER: \_\_\_\_\_ E-MAIL: \_\_\_\_\_

Please list submitted pieces below AND on long skinny slips that should come to us with each piece.

	Piece Title	Retail \$ Value	SMG ID #
1.	_____	_____	_____
2.	_____	_____	_____
3.	_____	_____	_____
4.	_____	_____	_____
5.	_____	_____	_____
6.	_____	_____	_____

When your pieces come into Ancient Grounds, the juror, Roland Crawford, or one of his agents, will make sure each piece has its long narrow entry slip close by (if not attached) and that the listing above matches what was brought in. Before we can take responsibility for your pieces (for insurance, etc.) we'll have to be certain all paperwork is in order or we will not accept your pieces. One of us will sign below and we'll ask you to sign as well. Your signature indicates you give us permission to photograph your works and use the images for promotional purposes. We've got to show off all the great artists in the Seattle Metals Guild membership!

Additional Notes:

\_\_\_\_\_  
Printed name of submitting artist

\_\_\_\_\_  
Signature of agent representing Ancient Grounds

\_\_\_\_\_  
Signature of submitting artist

\_\_\_\_\_  
Signature of juror & co-sponsor, RolandCrawford

\_\_\_\_\_  
Date pieces submitted to Ancient Grounds

# In Our Own Image Show Entry Slips

*Note:* Each piece is to be submitted with its own entry slip, even if not for sale. Please cut slips along horizontal line.

---

Artist Name:

Phone #:

Title of Piece:

Materials & Techniques:  
*Please write technique details  
on the back of slip, thanks!*

For Sale?

Retail Price:

SMG Show ID #

---

Artist Name:

Phone #:

Title of Piece:

Materials & Techniques:  
*Please write technique details  
on the back of slip, thanks!*

For Sale?

Retail Price:

SMG Show ID #

---

Artist Name:

Phone #:

Title of Piece:

Materials & Techniques:  
*Please write technique details  
on the back of slip, thanks!*

For Sale?

Retail Price:

SMG Show ID #

---

Artist Name:

Phone #:

Title of Piece:

*Materials & Techniques:*  
*Please write technique details  
on the back of slip, thanks!*

For Sale?

Retail Price:

SMG Show ID #

---

Artist Name:

Phone #:

Title of Piece:

Materials & Techniques:  
*Please write technique details  
on the back of slip, thanks!*

For Sale?

Retail Price:

SMG Show ID #

---

Artist Name:

Phone #:

Title of Piece:

Materials & Techniques:  
*Please write technique details  
on the back of slip, thanks!*

For Sale?

Retail Price:

SMG Show ID #





# MEMBERSHIP FORM

Date \_\_\_\_\_

Name \_\_\_\_\_

Address \_\_\_\_\_

City \_\_\_\_\_ State \_\_\_\_\_ Zip \_\_\_\_\_ E-mail \_\_\_\_\_

Home Phone \_\_\_\_\_ Work Phone \_\_\_\_\_ Fax \_\_\_\_\_

Check if you do **not** want your  address or  phone number published in the Guild Directory

- Enclosed is:
- \$30 for an individual membership, September 1, 2004 to August 31, 2005
  - \$40 for membership for any number of adults at the same address, Sept. 1, 2004 to Aug. 31, 2005

Would you like to help with:

- Workshops and Events
- Refreshments
- Newsletter
- Mailings
- Phone Tree
- Workshop Instructor Housing
- Workshop Instructor Transportation
- Other \_\_\_\_\_

Please check one:       new membership                       membership renewal

Send checks made payable to *Seattle Metals Guild* to:  
**Seattle Metals Guild, 1426 Harvard Avenue #154, Seattle, WA 98122-3813**

**YOUR GUILD NEEDS YOU!**

**Remember: We have several Board Members who will be vacating their posts this September to keep their forward momentum...if you or any of your peers would be interested in finding out more about how you can be involved, please contact any Board Member as listed on the back of the newsletter.**

**2004-2005 SMG Board of Directors**  
*All addresses are suffixed with "@seattlemetalsguild.org"*

<b>President:</b>	Ginger Kelly	206-720-1830	president@...
<b>Past President:</b>	Ron Pascho	425-488-3404	pastpresident@...
<b>Secretary:</b>	Lulu Smith	206-323-4669	secretary@...
<b>General Board Members:</b>	Kristi Zevenbergen	425-337-9405	board4@...
	J. Howard Kicinski	206-227-2207	board3@...
	John Heldridge	425-744-1724	board1@...

**SMG Services**

<b>Newsletter Editor:</b>	Charra Jarosz	206-783-1927	newsletter@...
<b>Library:</b>	Katie Yankula	206-706-0470	librarian@...
<b>Exhibitions:</b>	Susanne Osborn	206-283-8025	exhibitions@...
<b>Symposium Coordinator:</b>	Joan Hammond	425-391-5045	symposium@...



The Seattle Metals Guild is a non-profit organization made up of people with varying interests and involvement in traditional and contemporary jewelry and metal arts.

The Guild was founded in 1989 to provide for the exchange of ideas and information, as well as to offer affordable educational opportunities to its members and the public.

Our activities include: a website, bimonthly newsletter, exhibitions and a series of aesthetic, technical and business workshops and lectures.

The skills, energy and enthusiasm of the Seattle Metals Guild members promote and sustain its successful programs. We welcome new members and encourage participation by everyone.

The Seattle Metals Guild Newsletter is published bimonthly. Comments, announcements and ads are welcome from all SMG members.

**Please contribute to your Newsletter**

We encourage participation and welcome information about upcoming shows and events, articles about safety and bench tips you would like to share. If you have comments or something to contribute, please submit your information, generated in a word processing program, via e-mail. Include photos or logo artwork in JPEG format, if available. **Remember to provide who, what, when, where, why and how.**

**Charra Jarosz**  
charrita@earthlink.net  
newsletter@seattlemetalsguild.org

**Deadline for May/June is April 10. Articles received after that date may be published in the following newsletter.**



1426 Harvard Ave. #154  
Seattle, WA 98122-3813

**March/April 2005**  
www.seattlemetalsguild.org

**REMINDER:**  
Lectures continue on  
March 10th!