

Educational Outreach

Passing the Torch: Washington State High School Metal Arts Exhibition

The third annual statewide high school metal arts exhibition at Gallery One in Ellensburg, WA opened with much fanfare on April first, thanks to the diligent and determined work of the Educational Outreach Committee. This will be the last year the competition will be led by Nancy Worden; SMG member and former SNAG president Micki Lippe, along with SMG Board Member and arts advocate Jennifer Howard-Kicinski, will be stepping forward to take over the task for 2006.



Left to right: Micki Lippe, Nancy Worden, Jennifer Howard-Kicinski

Fifty-five students, selected by their teachers, submitted work from nineteen high schools and skill centers across the state. The participating schools for this year are: Auburn High School, Auburn Riverside High School, A.C. Davis High School (Yakima), Bellingham High School, The Bush School (Seattle), Okanogan High School, Lewis and Clark High School (Spokane), Kamiakin High School (Kennewick), Lynden High School, Mead High School (Spokane), Oliver M. Hazen High School (Renton), Seattle Academy of Arts and Sciences, Southridge High School (Kennewick), Sumner High School, Sedro-Woolley High School, Shorewood High School (Shoreline), Toppenish High School, West Sound Skills Center (Bremerton), and Woodinville High School. We are pleased to have such a wide geographic representation of the state, with both public and private schools participating!

The opening night party and awards ceremony started at 5 pm, awards being announced at 6 pm; first, second, third and honorable mention prizes were awarded in both sculpture and jewelry categories. Light refreshments were served and all three floors of the gallery, a non-profit arts center, were opened to the public, including professional artists' studios. The party was a fantastic time; students mingled with their peers from around the state and visited with established artisans. The show will run until Saturday, April 30th.



Frogbox, Alex Boehler, Third Prize

Winners: Jewelry

Cabrina Channing, Auburn Riverside, First Prize
 Krystyna Jack, Auburn, Second Prize
 Joanie McManus, Auburn Riverside, Third Prize

Honorable Mention:

James Wilson, Oliver M. Hazen HS
 Kevin Goeltz, The Bush School
 Brian Kenny, Bellingham

Passing the Torch continued next page...

Events Calendar

Date	Event	Page
May 3-15	Andy Cooperman show, Pratt	7
May 5	<i>In Our Own Image</i> deadline	6
May 12	Andy Cooperman lecture	7
May 14	<i>Zero Karat</i> opening, Tacoma	3
May 14-15	International Jewelers' Workshop	3
May 21	Pratt Auction	2
June 11	Studio Tour	7
June 18	<i>In Our Own Image</i> ad artwork deadline	6
June 18	<i>Zero Karat</i> : Donna Schneier lecture and panel discussion	3
June 19-20	Women's Shelter Jewelry Project	5
June 22-25	SNAG Conference	4
June 30	Flintridge Foundation Awards deadline	6
July 23	<i>In Our Own Image</i> final deadline	6
July 23	Swap Meet at Pratt Fine Arts	6
August 1	<i>Concourse A</i> deadline	6
August 11	C. James Meyer lecture	2
August 12-15	C. James Meyer Workshop, Pratt	2
August 25	<i>Wearable Expressions</i> deadline	6
Oct 21	SMG General Meeting	
Nov 4	Symposium Reception	4
Nov 5	Symposium Lectures	4
Nov 19-Jan 16	<i>Wearable Expressions</i> exhibition	6

Winners: Sculpture

Abhishek Sheth, Oliver M. Hazen HS, First Prize
Johnny Kuiper, Sumner, Second Prize
Alex Boehler, Shorewood, Third Prize

Honorable Mention:

Eric Sinnett, Sumner
Raven Mullins, West Sound Technical Skills Center
Beau Ritz, Lynden

Outstanding Teacher Awards

Wendy Woldenberg, Auburn Riverside
Gary Grossman, Oliver M. Hazen; HS
Bela Kovacs, West Sound Technical
Robin Culpepper, Sumner;
Marilyn Smith, The Bush School

CONGRATULATIONS TO ALL!!!!



Lunacy Artist: Raven Mullins, Honorable Mention, Sculpture

Thank You

**Pratt Fine Arts Center's
23rd Annual Art Auction**

The always anticipated Pratt Fine Arts Center Auction is coming up on Saturday, May 21st. As usual, many of Seattle Metals Guild's talented members have come through and collaborated to produce a wonderful necklace for auction on that gala evening. This year the necklace was a tribute to our dearly loved Ramona Solberg, who was kind enough to contribute to the piece in metal as well as in spirit and flavor; a special thank you goes out to her!

The necklace is entitled *All Nations*, and features the handiwork of seventeen participating artists: Nanz Aalund, Aaron Barr, Venetia Dale, Ken Hall, Joan Hammond, Ginger Kelly, Kiraya
www.seattlemetalsguild.org

Kestin, Jennifer Howard-Kicinski, Micki Lippe, Suzette O'Dell, Susanne Osborn, Ron Pascho, Ramona Solberg, Jennifer Stenhouse-Lien, Joan Tenenbaum, Addy Thornton and Kristi Zevenbergen. Artistic license was taken with "spacer beads" sent by Ramona Solberg; they serve beautifully in a lovely pair of earrings which are truly special and complement the necklace well. Thanks to Nanz Aalund, whose "bead" served as the clasping mechanism and to Kristi Zevenbergen for assembling the piece! Thanks also go to Fusion Beads for donating stringing materials.



This year we have asked Doug Yaple, professional photographer and SMG member, to photograph these fruits of our labor—our intention is to submit the piece to Lark Books' upcoming publication, *500 Necklaces*. Doug was kind enough to accommodate us; he does lots of portfolio work for our local metals artists and can be reached at dyaple@comcast.net. Thanks Doug!

As a final note, Pratt is still looking for volunteers to help make the auction a success. It takes a heap of planning and even more time to put together an event such as this. Volunteers are necessary for intake of work as well as for general preparation and facilitation, the night before and the night of the actual auction and dinner. Involvement is a fun and rewarding experience...if you can spare some time and would care to assist, please call Kelly Strantz, Auction Coordinator, at 206.328.2200, ext. 67, or e-mail at kstrantz@pratt.org

workshops

MASTER ARTIST INTENSIVE

Material Transformations with C. James Meyer

Date: Friday-Monday, August 12-15 (4 sessions)
Time: 9:30 am – 5:30 pm
Place: Pratt Fine Arts Center
1902 S. Main Street, Seattle
Cost: \$325
Lecture: Thursday, August 11th, FREE
Time: 6:30 pm
Location: Facère Jewelry Art Gallery

This intensive course will focus on the incorporation of alternative materials (pebbles, glass, rock, shells, slate, marble and granite) into jewelry and metal objects. Learn the basics of lapidary work, including the use of the diamond saw and diamond lapidary tools to cut, shape and polish these materials. This course will also deal with the visual and technical problems of incorporating these materials into jewelry and functional objects. Prerequisite: Jewelry/Metalsmithing I or equivalent.

Master Artist continued next page..

...Master Artist, continued

C. James Meyer lives and teaches in Virginia. He is currently a Professor of Art at Virginia Commonwealth University, having begun in 1990; he had been an instructor there since 1973. He received his BA in studio art from State University of New York at Albany, and his Master in Fine Art in gold and silversmithing from State University of New York, at New Paltz. He has exhibited widely in the northeastern and east coastal U.S. with additional exhibits in Arizona, Texas, Chicago and Seoul, Korea.

This Master Artist intensive is a partnership with the Seattle Metals Guild and Pratt Fine Arts Center; registration will be conducted through Pratt. For more information go to www.pratt.org or call 206.328.2200.



Left: C. James Meyer Right: Pearl Clasp, 18K gold, platinum, diamond, granite, pearls

Events

Zero Karat at the Tacoma Art Museum, May 14 - September 11

On May 14th, TAM will proudly present the opening of *Zero Karat: Jewelry in Non-Precious Materials from the Collection of the Museum of Arts and Design*. For this exhibition, the museum has organized a remarkable program, featuring works from the extensive collection of Manhattan-based art dealer Donna Schneier, and will include an overview by the collector and an artist's panel discussion.

The works in *Zero Karat* challenge the viewer to reconsider what is precious while exploring the development of the studio art jewelry movement as an international phenomenon. Beginning in the late



Robert Ebendorf Neckpiece, 1985. Chinese newspaper, gold foil, hammered end caps, ebony beads, rubber, 14x10x2 in. Museum of Arts & Design, New York, gift of Donna Schneier. Photo: Martin Tuma, courtesy of Museum of Arts & Design

1960s, avant-garde jewelers in Europe and the United States asserted that ideas in jewelry design had greater relevance to a rapidly changing society than the traditional values of wealth and rarity typically associated with jewelry. To shock the public and encourage wearers to associate the jewelry with ideas rather than net worth, these artists replaced precious metals and gemstones with such materials as aluminum, rubber, paper and plastic, often taken directly from industrial or domestic applications. Ranging from the subtle to the flamboyant, these works celebrate the body as they blur the boundaries between jewelry and clothing, often stretching wearability to its limits.



Verena Sieber-Fuchs, Firecracker Necklace, 1986 Firecrackers, wire, thread, 21.5 in.(diameter) Museum of Arts & Design, New York, Gift of Donna Schneier Photo: Eva Heyd, Courtesy of Museum of Arts & Design

On Saturday, June 18th at 2:00 pm Schneier will speak about the collection, followed by a 90-minute panel discussion with artists from around the country, including Bruce Metcalf, Kiff Slemmons, Sondra Sherman, Keith Lewis and Lisa Gralnick. This discussion will be moderated by Susan Cummins, and while the topic is not finalized, the discussion will touch on the merits of museum collections. *Zero Karat* was reviewed in the Winter 2003 issue of *Metalsmith* by Bruce Metcalf.

The Tacoma Art Museum is located at 1701 Pacific Avenue; more info can be found at www.tacomartmuseum.org or by calling 253.272.4258.

International Jewelers' Workshop, May 14 -15

The Skagit Rock and Gem Club joins the Creative Jewellers Guild of British Columbia in presenting the International Jewelers' Workshop in Mount Vernon, WA, May 14th and 15th. Demonstrations and/or classes in Precious Metal Clay, torch enameling, metal etching, anodizing, inlay, faceting, kaleidoscopes, chainmaking and much more! Cost is \$25 per person for both days or \$15 for one day. For registration information you can contact Workshop Coordinator Vi Jones at rocks1x1vi.george@verizon.net, or at 360.424.8340.

www.seattlemetalsguild.org

Northwest Jewelry/Metals Symposium

Sponsored by the Seattle Metals Guild and Pratt Fine Arts Center, November 2005 Seattle, Washington



Dee Fontans: *Outing The Body*, "Spring Dress", cloth, hula hoops. Model: Dee, Herself
Photo: Jay Robinson

Northwest Jewelry/Metals Symposium is a weeklong series of events that brings together professional artists, art collectors, and students of jewelry and the metal arts. The symposium creates a forum to explore the personal, historical, or social significance of jewelry, sculptural, and metal arts; to exhibit and view the work of student and professional artists; and to teach specific metalsmithing techniques. It offers the people who attend an opportunity to exchange knowledge and ideas through lectures, exhibits, receptions, and a workshop. Events are free unless otherwise noted. Events of the symposium and contact information are as follows:

Schedule of Events for 2005

November 4th: Reception at Facère Jewelry Art Gallery, 5:00 - 7:00 pm, 1420 5th Ave., Seattle. 206.624.6768. www.facerejewelryart.com. Champagne Welcoming Reception for the 2005 Northwest Jewelry/Metals Symposium lecturers and attendees. Refreshments will be served.

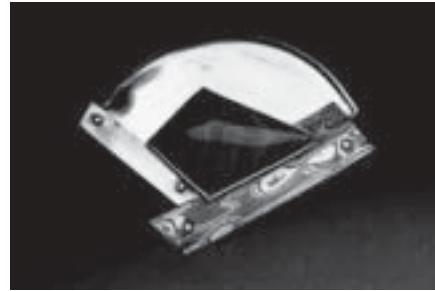
November 5th: Day of Lectures at the Seattle Art Museum, First Avenue and University Street, Seattle. Join other artists, collectors, gallery owners, and students for a series of lectures. Speakers include Dee Fontans (wearable art/multimedia artist, www.deefontans.com), Lee Rumsey Haga (contemporary designs in metal and aesthetics, www.cnaguild.org/member_gallery/haga.htm), Ela Lamblin and Leah Mann (co-founders of Lelavision, sculpture, music and movement, www.lelavision.com),



Vessels of Vibe, pictured: Ela Lamblin Photo: Leah Mann

Richard Mawdsley (metalsmith/jeweler, thedesignspace.net/art/gallery/ornament), and Michael Monroe (Executive Director/Chief Curator Bellevue Arts Museum, www.bellevueart.org). For more information and registration forms, visit www.seattlemetalsguild.org or contact Joan at symposium@seattlemetalsguild.org (subject: "Symposium") after 8/15/05.

November (Week of the 7th, dates to be announced): Master Artist Class and Exhibition with Dee Fontans at Pratt Fine Arts Center, 1902 S. Main St, Seattle. Registration required. For registration fee and other information, call Pratt at 206.328.2200 or visit www.Pratt.org



Lee Rumsey Haga, "Japanese Fan" sterling silver, mokume-gane, shakudo, brass, agate. Photo: Jim Lomerson

Symposium Auction Donation

The Northwest Jewelry/Metals Symposium is asking members for support by inviting them to donate a piece of work for our silent auction held in conjunction with the Symposium. Raising money by this means allows us to continue to bring in nationally-renown speakers from around North America. It also helps us to continue sponsoring college students at a reduced fee and to keep the Symposium lectures affordable for those paying general admission.

Please contact Joan Tenenbaum at merlinm@olympus.net, or 253.858.7478, as soon as possible to let her know whether you can support the Symposium with a donation. A piece of your own work in the retail price range of \$50 or above would be great, as would a book, tool or other useful item. She will send out reminders and instructions on how to deliver the work to Facère Jewelry Art Gallery one month before the Symposium. Thank you all for your support!!

2005 SNAG Conference: *Intersection*

Each year a different North American city hosts SNAG's international conference; the 2005 SNAG Conference, *Intersection*, will be held in Cleveland, Ohio, June 22-25 at the Sheraton Cleveland City Center. The conference will address the intersection of jewelry, metalsmithing, and enameling with industrial design, the "fine arts," and fashion. *Intersection* will be examined in the contexts of culture, history, and technology.

SNAG conference continued next page...

...SNAG conference continues

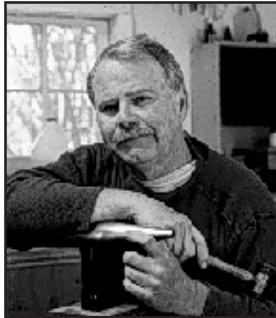
The interactive SNAG conference promotes fellowship and provides an exciting atmosphere for spirited discussions and exchange of ideas. The conference includes three days of presentations, demonstrations, and panels offering unparalleled exposure to current work in the metalsmithing industry. A full range of suppliers demonstrate new products, tools and equipment and offer items for sale; museums and galleries present exhibitions related to metals and jewelry; and the Connections Room helps students, educators, emerging artists and art professionals make connections.

You can register or reserve a hotel room online; details on specific conference features as well as on registration are linked at www.snagmetalsmith.org/snag/snagconferences.asp. If you would prefer to register by mail, please complete the registration form from the Winter issue of *Metalsmith*; you can also fax the form to 630.416.3333. SNAG members receive a \$70.00 discount off the conference fee and SNAG provides special very low rates for students. You can join or renew at the same time you register and take advantage of this discount.

Workshop Review

Harold O'Connor Workshop March 19th and 20th, 2005

The jewelry studios at North Seattle Community College were the site for Harold O'Connor's jam-packed two-day workshop on surface embellishment techniques. O'Connor brought to the demos 41 years of bench experience grounded in classical European training; he is matter-of-fact about the reality of making a living as a jeweler, and he supplements his income conducting workshops for which he travels extensively. Harold



can list the top jewelry schools in the world at the drop of a dime, while spouting absolutely endless tips about tools, teachers, metal alloys, gadgets and their suppliers...these, all tempered by his dictum: "amateurs buy tools, professionals buy metal." We saw a no-nonsense, 'mistake'-friendly, wire-feed-solder-with-minimum-flux approach to working with metal. O'Connor advocates minimum tool use, using propane and air with his E-Z torch, polishing with a burnishing tool versus wheel and compound, soldering on thermaboard or compressed charcoal, and infrequent pickling in diluted solution—nothing gets between Harold and his projects.

Two processes were demonstrated the morning of each day, and participants had the afternoons to dive into metal. First was roller printing/embossing sheet, scoring it with a separating disc, folding it & soldering the folds, then isolating a design field within the piece, attaching an appropriate frame and finalizing textures and polish if any after brooch pin stem is attached. Second was 'landscaping' 820 reticulation silver, showing with different torches after no more than four heats and pickles that torch control is paramount even with tiny flames. In between these main demos were

shorter quick moves like pouring metal ingots, the best way to hold a flex-shaft, putting a spinning burr to metal, and on and on...his insights are vast! On the second day he demonstrated fusing thin pure gold sheet to heavier sterling sheet, then rolling it out to get four to six times the gold surface area. The 'dublet' or 'gold-filled' piece is then textured through the gold and treated to bring out color differences against the gold. Kodak's rapid selenium toner was one of many colorants. For those who wanted it O'Connor sold bargain packages of metal samples and simple tools which were most helpful for the last technique of the workshop: granulation. We saw the making of granules, brush and tweezer placement, and of course, the fusion itself. Participants successful in fusing the granules on reticulation silver were those who knew how close to melting they could take the metal.

In sum it was a terrific workshop; no one left disappointed. Covering diverse techniques and assisting us all in refining our benchwork techniques, Harold enlightened each of us, and would be more than welcome to visit us again—thanks Harold! Thanks, too, to Lynne Hull and North Seattle Community College for providing a great venue for a great experience.

- Roland Crawford

Volunteer

The Women's Shelter Jewelry Project

This project, developed by local artist Micki Lippe, serves to provide functional jewelry to women's shelters and local chapters of Dress For Success, assisting low-income women in making tailored transitions into the work force. Broken and otherwise unwanted jewelry is collected from a variety of sources, and is then cleaned and repaired by volunteers.



The next Women's Shelter Jewelry Project Days will be June 19th and 20th at Pratt Fine Arts Center in the Orange Building, from 10 am to 4 pm. This session will involve sorting only, so you need not be skilled in repair to participate—any length of time you can contribute is welcome!

Contact Micki at mickilippe@comcast.net, or 206.328.2479, to indicate your interest or for more information.

www.seattlemetalsquid.org

In Our Own Image: an SMG Juried Members' Show

If you haven't already begun your entry for this exciting exhibition and sale, what are you waiting for? New Board Member and gallery owner Roland Crawford has put great care and effort into presenting this opportunity to our membership, so don't be left behind! For a full downloadable prospectus, visit our website at http://seattlemetalsguild.org/events/in_our_own_image.pdf. Remember, to be included in the best advertising and promotional postcards, your entry must be received by May 5th! But don't be discouraged, June 18th (for consideration in other adverts) and July 23rd (the ultimate deadline) will also be honored.

Wearable Expressions

The Fifth Biennial International Juried Wearable Expressions exhibition will be held November 19-January 16 at the Palos Verdes Art Center in California; slides or digital entries are due Thursday, August 25th. The competition is open to adults 18 years or older, and individual or collaborative entries are invited—innovation is encouraged! Submission of images implies that, if accepted, the work will be available for the duration of the show; for a full prospectus, visit www.pvartcenter.org, or send an SASE to Palos Verdes Art Center, 5504 West Crestridge Road, Rancho Palos Verdes, CA 90275. For specific information, e-mail Gabrielle at gabrielle2@earthlink.net, or call 310.541.2479.

Flintridge Foundation Awards for the Visual Arts

Visual artists hailing from the Pacific Northwest whose work has demonstrated high artistic merit for 20 or more years are invited to apply to the fifth biennial Flintridge Foundation Awards for the Visual Arts. Ten artists will be selected by regional panels to receive unrestricted grants of \$25,000 each; applicants must work in fine arts and crafts and have lived at least nine months per year in the tri-state region for the past three years. The awards are intended to encourage artists who do not have current national renown. The application for the 2005/2006 awards can be found on the website at www.FlintridgeFoundation.org, and the deadline for entry is Thursday, June 30th. For more information contact the Flintridge Foundation, Awards for Visual Artists, 1040 Lincoln Ave., Ste. 100, Pasadena, CA 91103, or call 800.303.2139.

Seattle Metals Guild/Pratt Fine Arts Center Swap Meet

On Saturday, July 23rd, SMG and Pratt are proud to present the return of the SWAP MEET! This is your chance to dispense with your unused and under-loved items: perplexing tools, books you've read a thousand times or will never read, usable scrap. The atmosphere will be casual and spontaneous—you won't believe what you can unload or walk away with! For more info call Hilary Lee at 206.328.2200, ext. 28, or e-mail her at hlee@pratt.org. See you there!

www.seattlemetalsguild.org

Concourse A

A juried exhibition of SMG members at Sea-Tac Airport
September 2005 through March 2006

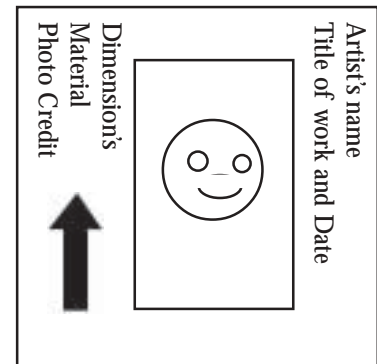
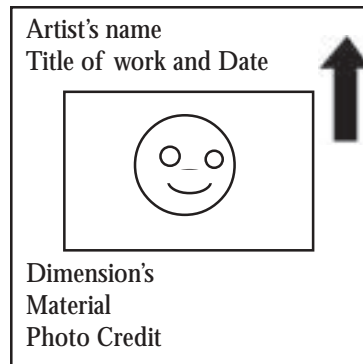
Application process:

The show will be housed in two 30" x 30" x 40" cases. Therefore, one of the jurying qualifications is the space available. With this in mind, small work is encouraged. **All work must not exceed 7 inches in any dimension.** All work must be handcrafted by the artist and may or may not be for sale at the artist's discretion. The Port of Seattle will fully insure the work for the duration of the exhibition. Each paid member of the Seattle Metals Guild may send up to two slides of one piece. **There is no entry fee, and each person may only enter one work for consideration.**

Slides:

All slides must be clearly labeled according to the diagram below and **must include accurate dimensions.** Please send a self-addressed, postage paid envelope for the return of slides. **No slides without an SASE will be returned.** Please send slides, a copy of the entry form, found at the end of the newsletter, and an SASE for return of slides by August 1, 2005 to:

Concourse A Exhibition
7044 Jones Ave NW
Seattle WA 98117



Jurors:

Andy Cooperman, local jeweler and metalsmith
Marcia Bruno, former SMG president and local artist

Questions? Please contact Susanne Osborn at (206)283-8025 or by e-mail, susanneosborn@yahoo.com.

Studio Tour and Potluck Party

It's studio tour time again! Come see what your Seattle Metals Guild friends are up to in their studios! This year we're visiting three studios in central, south and west Seattle.

Date: June 11th, 11am to 6pm

Locations:

11am –12:30pm: 1426 S Jackson, studio of Jennifer Bennett, Tia Dale, John Heldridge, Jennifer Howard Kicinski, and Micki Lippe
1pm –2:30pm: 1244 S Concord St., studio of Catherine Grisez
3pm –6pm: 2210 California Ave SW, studio of Smersh Design Jewelry and *Click! Design that Fits*

Directions:

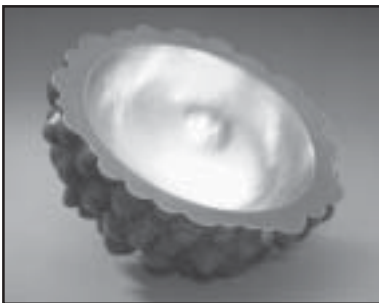
1426 S Jackson
Coming from the south on I-5 take the Dearborn Exit. Turn right on Dearborn, left on Rainier, and right on S Jackson.
Coming from the north on I-5 take the James St. Exit. Continue on the service road until Yesler. Turn left on Yesler, right on Boren, right on 12th Ave, left on S Jackson. The studio is 1.5 blocks up on the left side of the street.
From the east, take the Rainier exit from I-90. Head north on Rainier, turn left on S Jackson.



Tia Dale, Salt and Pepper Shakers, Sterling Silver
Photo: Jennifer Howard Kicinski

Catherine Grisez 1244 S Concord St.

From 1426 S Jackson, head west on S Jackson. Turn left on 2nd Ave, bear right onto 4th Ave S. Continue on 4th Ave S 3.8 miles until Marginal Way. Turn left on Marginal Way, right at 16th Ave S. 16th Ave S changes to 14th Ave S. Continue on 14th until S Concord St. Turn right at S Concord just past the 76 gas station. Catherine's place is just behind the gas station.



Bowl No. Four Copper and sterling silver, 1999

Click! Design that Fits/Smersh Design Jewelry 2210 California Ave SW

From Catherine's turn right onto 14th Ave S. Bear right at Des Moines Memorial Dr., turn right onto 99 N. Continue on 99 N until it intersects E Marginal Way; bear left on E Marginal Way, bear right at Alaskan Way viaduct and look for signs for the West Seattle Bridge. Turn left at S Spokane (West Seattle Bridge). Once across the bridge take the Admiral exit, stay on Admiral as it winds up the hill. Turn right on California, *Click!* is on the right down about two blocks, right next to Blockbuster Video.



Kate Bracelet Concrete, sterling silver, pearls, elastic cord, 1999

Don't forget that the party from 3pm – 6pm at *Click!* is a potluck, so bring some goodies and good cheer!

Pratt Fine Arts Center Northwest Artist Exhibitions and Lectures

The Northwest Artist Program features workshops, exhibitions and lectures by regional established and emerging artists. The artists selected have made a significant contribution to the arts in the Northwest and are recognized as having a distinctive vision. The purpose of the program is to bring students and well-known artists together offering an enriching creative experience and connection between artists of all levels.

From May 3rd to the 15th, the inimitable Andy Cooperman will be exhibiting his work as this season's Master Artist in Jewelry; exhibitions are on display in Pratt's Orange Building, Studio B. Andy will be lecturing for your wild entertainment on Thursday, May 12th, at 6 pm...always a good time, be there or be square! If you wish to receive additional information about the Exhibition and Lecture Series, please e-mail Pratt at info@pratt.org



Canyon rings 14K white gold, 18k yellow gold.
Photo: Doug Yaple

Get your own web page!

Collect three images of your work (slides or digital images), an artist's statement of up to 500 words, and any contact information you'd like to include: address, phone, e-mail address, gallery, or personal website address.

Submit your information via e-mail to:
Matthew@sites4artists.com; or by US mail: sites4artists, attn: Matthew, 5202 21st Ave. SW, Seattle WA 98106.

Send a check for \$40 (note on memo line that it's for your web page) made payable to Seattle Metals Guild. Send to Seattle Metals Guild, 1426 Harvard Ave. #154, Seattle WA 98122.

For more information please visit our website at:
www.seattlemetalsguild.org

Marketplace

Note: Ads will run for one issue. If you wish to resubmit you must do so by each newsletter deadline.

Seeking Position: Recent graduate of Revere Academy's Jewelry Technician program with one year+ experience in fabrication is looking for FT or PT position as a jeweler's assistant in the Seattle area. Have good work ethic and am eager to learn trade. Resume w/samples and refs available upon request. Call Katherine at (206)325-9201.

Seeking Apprenticeship: I'm a first-year silversmithing student/aspiring jeweler looking to expand my knowledge of silversmithing with a part-time apprenticeship. Ideal position would provide training in all areas of jewelry fabrication. Skills include soldering, stone setting, forging, and polishing, plus attention to details, hard working, and eager to learn. Please *contact* vjg206@yahoo.com.

Handcrafted Designer Cabochons At V&O Lapidary: Select from our broad assortment of beautifully styled and finished cabochons, or let us custom design for you from our extensive stock of raw materials. Call Bon Vernarelli & Larry Ostler at (206)364-9278. Located in N. Seattle. vo_lapidary@msn.com

Resources

Danaca Design Metal Crafting Center and Gallery 5619 University Way NE, Seattle 98105

The Metal Crafting Center is an increasingly well-equipped, 8-bench, nonferrous metal fabrication studio. The space is a teaching facility with a quarterly schedule of classes and workshops. It is also available for hourly bench or studio rental (current open blocks are Mon & Thu, 6pm - 9pm, Fri 3pm - 6pm, sun 1:30pm - 4:30pm; call for orientation schedule and rental rates). Included in the space is a store front gallery representing local artists who incorporate metal into their work. For more information contact Dana at (206)524-0916, e-mail danacadesign@hotmail.com.

www.seattlemetalsguild.org

The Alchemist's Casting Shop Seattle, WA 98126 (206)933-9255 the-chemist@comcast.net

High quality production casting services in platinum, gold, silver, bronze. RTV, vulcanized silicone and rubber molds. Metal fabrication, wax carving to specifications. Visa/MC accepted. Call for a free consultation.

Schools

Oregon College of Art and Craft 8245 SW Barnes Rd., Portland Or 97225 (503)297-5544 www.ocac.edu

Pratt Fine Arts Center 1902 South Main Street, Seattle 98144 (206)328-2200

Pratt Fine Arts Center, Seattle's premier studio for the visual arts, provides unparalleled opportunities to artists in its world-class studios for glass, sculpture, jewelry, metalsmithing, painting, drawing and printmaking. Courses and workshops are available for beginning as well as advanced students. Open lab times are available for independent artists during the week and on many weekends. Please call for a full schedule and a registration packet.

North Seattle Community College 9600 College Way N., Seattle (206)527-3600 <http://nscclx.sccd.ctc.edu>

The Seattle Community College system offers jewelry design and light metal fabrication at its North campus. The facilities are some of the best in the country with torches at every bench, and all the necessary hand tools needed to construct fine jewelry. The studio has designated hot and cold working areas for metal fabrication, and a complete casting setup for gravity and centrifugal processes. The sheet metal equipment includes a metal shear, box brake, metal lathe, and milling machine, which can be used for tool-making and metal construction. There is also basic lapidary equipment available for stone cutting and polishing. For more information, contact Lynne Hull at (206)526-0062 or the Humanities department at (206)527-3709.

South Seattle Community College 6000 16th Avenue SW, Seattle 98106 (206)764-5352

South Seattle Community College remains the best-kept secret in the greater Seattle area. Craftspersons of every discipline are delighted to discover that the finest educational welding fabrication facility (possibly in the universe) welcomes both vocational and recreational students. We got the stuff! Calling ahead is best, but you're OK to stop by anytime. Sessions Mon-Fri, 7am-12pm, and Mon/Wed or Tue/Thu evenings. Call John Todd, (206)764-5352, (206)764-5359(w), or (206)283-5069(h). E-mail to jtodd@sccd.ctc.edu

Bellevue Community College 300 Landerholm Circle SE, Bellevue 98007-6484 (206)641-2263

Bellevue Community college offers classes and workshops in Jewelry and Metalsmithing at affordable prices. View our website at <http://www.bcc.ctc.edu>, click on Continuing Education, then ARTS.



Membership Form

Date _____

Name _____

Address _____

City _____ State _____ Zip _____ E-mail _____

Home phone _____ Work phone _____ Fax _____

Check if you do not want your address or phone number published in the Guild Directory

Enclose: \$30, individual membership, Sept. 1, 2005 to August 31, 2006

\$40, membership for any number of adults at the same address, Sept.1 2005 to Aug 31 2006

Would you like to help with? Workshops & Events Refreshments Newsletter Mailings

Phone Tree Other

Please check one: new membership membership renewal

Send checks made payable to Seattle Metals Guild to:

Seattle Metals Guild, 1426 Harvard Avenue #154, Seattle WA 98122-3813

Concourse A Entry Form

Artist's Name: _____

Address _____

Phone _____ E-Mail _____

Title of Work and Date _____

Description and Materials _____

Dimensions (LxWxH) _____

Photo Credit _____

Retail Value _____

2004-2005 SMG Board of Director

All addresses are suffixed with "@seattlemetalsguild.org"

President:	Nanz Aalund		president@...
Secretary:	Lulu Smith	206-323-4669	secretary@...
Treasurer/Membership:	Kristi Zevenbergen	435-337-9405	membership@...
General Board Members:	J. Howard Kicinski	206-227-2207	board3@...
	Roland Crawford	206-749-0747	agrounds@qwest.net

SMG Services

Newsletter Editor:	Charra Jarosz	206-783-5935	newsletter@...
Graphic Designer:	Ruby Smale	206-322-3307	rlsmale@aol.com
Library:	Katie Yankula	206-706-0470	librarian@...
Exhibitions:	Susanne Osborn	206-283-8025	exhibitions@...
Symposium Coordinator:	Joan Hammond	425-391-5045	symposium@...
Workshop Coordinator:	John Heldridge	425-744-1724	workshop@...



The Seattle Metals Guild is a non-profit organization made up of people with varying interests and involvement in traditional and contemporary jewelry and metal arts.

The Guild was founded in 1989 to provide for the exchange of ideas and information, as well as to offer affordable educational opportunities to its members and the public.

Our activities include: a website, bimonthly newsletter, exhibitions and a series of aesthetic, technical and business workshops and lectures.

The skills, energy and enthusiasm of the Seattle Metals Guild members promote and sustain its successful programs. We welcome new members and encourage participation by everyone.

The Seattle Metals Guild Newsletter is published bimonthly. Comments, announcements and ads are welcome from all SMG members.

Please contribute to your Newsletter

We encourage participation and welcome information about upcoming shows and events, articles about safety and bench tips you would like to share. If you have comments or something to contribute, please submit your information, generated in a word processing program, via e-mail. Include photos or logo artwork in JPEG format, if available. **Remember to provide who, what, when, where, why and how.**

Charra Jarosz
Charrita@earthlink.net
newsletter@seattlemetalsguild.org

Deadline for July/August is June 10.
Articles received after that date may be published in the following newsletter.



1426 Harvard Ave. #154
Seattle, WA 98122-3813

May/June 2005

www.seattlemetalsguild.org