



Brandon Forgie, *United Patriot*



Katherynn Enloe, *Twilight*



Gerald Burke, *Ode to Blossfeldt*

7th Annual Passing the Torch

2009 Washington Statewide High School Jewelry/Metals Exhibition

PASSING THE TORCH – The Seattle Metals Guild is proud to announce the 7th Annual “Passing the Torch” Statewide High School Metal Arts and Jewelry Competition.

This year the exhibition is being held at the North Seattle Community College Art Gallery. The show runs from April 14th through May 8th 2009.

On Saturday, April 18, we will have an open house and tour of the art department at North Seattle Community College beginning at 2:00 PM, followed by the awards ceremony at 4:00 PM. The scheduled open house will give students an opportunity to see the facilities available and to have some hands-on experience in the Jewelry Studio.

With so much emphasis on sports and computers, this is a chance for the students who are interested in art to have their

day. Prizes are awarded for first, second and third place and three honorable mentions in each of two categories: Jewelry or Sculpture/Holloware. Last year the award winners received approximately \$2000 in gift certificates and prizes.

Each school may submit up to five entries – maximum one entry per student. Passing the Torch forms and information for teachers may be printed from the Seattle Metals Guild website in the Events section at: <http://www.seattlemetalsguild.org/events/2009-passing-the-torch>.

Please come and support this very important event that the Seattle Metals Guild sponsors, either Opening Night or sometime during its stay at the college gallery.

EXHIBITION DATES: April 14 - May 8, 2009

OPEN HOUSE: April 18, 2009, 2:00 PM
North Seattle Community College Jewelry Studio

AWARDS CEREMONY: April 18, 2009, 4:00 PM
North Seattle Community College Concert Hall

DEADLINE FOR ENTRIES: April 4, 2009

Please see page 11 for a list of awards from 2008

Presidents Letter

Feb 10, 2009

General Meeting Update and Great Start to the New Year!

Wow! What a great start of the New Year. Harold Balazs impressed us all with a great presentation of his “Wack and Tack” technique when he was presented with the Lifetime Achievement Award at our General Meeting. A big thanks to Kitti deLong for taping the ceremony. We presented several hammers to members who have served two or more years on the board of directors. Jennifer Howard-Kicinski received a Gold Hammer for her time as “President” and “Past President” on the board, John Caster received a Silver Hammer for his time as Vice President, Jena Hounshell received a Silver Hammer for her time as Vice President and Newsletter, Jennifer Stenhouse received a Silver Hammer for her time as Secretary, Roland Crawford received a Silver Hammer for his time as Treasurer, and Judy Kuskin received a Silver Hammer for her time as Membership Director. I would like to thank all of these people for their unselfish devotion to the metals community. Seattle Metals Guild could not function without their years of dedicated work. The hammer was designed by Jennifer Stenhouse as a visual symbol for two or more years of service as Board members or standing committee members to the Metals Guild. This year’s hammers were donated by The Alchemist, in West Seattle; a big thanks to you for your support.

The Lecture Series is now in full swing, Aaron Barr continues to amaze us with the many outstanding artists he introduces. You still have time to catch the last two lectures in this year’s series: March 12th and April 9th. Come enjoy the evening with us.

The Guild’s last event of 2008 was our annual Ornament Party at Kiraya Kestin’s house. This year approximately 40 members including both familiar and new faces enjoyed the festivities. Kiraya’s house has a wonderful view of the lake. We learned about the history of the area, including the amusement park across the lake which unfortunately was torn down many years ago to make way for other buildings. I think we all thought it might be nice to go play there.

The food was outstanding. An incredible chocolate fountain seemed like a magnet for the party goers. As always, the main event was the ornament exchange. The ornaments ranged from wire face and bird houses to enameled metal and bronze wool. There was truly something for everyone. We saw a variety of techniques in metal working, some of which always provoke laughter and questions to the maker; who, where, and why. Over all it was a great party, sorry if you missed it, next year is our 20th and hope to see all of you then.

John Caster
President

SMG Events

Date /Event	Page
Jan 31 - May 25: 9th NW Biennial, Tacoma Art Museum	
March 12: Lecture Series; Lauren Grossman	7
April 9: Lecture Series; Samia Shalabi	7
April 14 - May 8: Passing the Torch	1

Contents

Passing the Torch	1
Board News:	
President’s Letter	2
Congratulations; Gold and Silver Hammer Awards	2
SMG Lifetime Achievement Award	3
2009 SMG Exhibition Updates	3
SMG Organization	4
Upcoming SMG Scholarship Deadlines	4
SMG Necklace and the Pratt Auction	4
Member News:	
The 9th Northwest Biennial	5
Selling on ETSY	5
Mentoring Our Emerging Artists	5
Events:	
Women’s Shelter Jewelry Project	7
SMG Lecture Series	7
SMG Ornament Party	7
Passing the Torch	8
Reviews:	
Lecture Series – Chris McMullen	8
4+1 Jewelry Show	9
Thumbnail Sketches	10
Membership Form	11
Marketplace	11

Congratulations!

Congratulations to our Gold and Silver Hammer Awardees!

Gold Hammer

Jennifer Howard-Kicinski

for her service as the SMG President,
Past President on the board

Silver Hammer

John Caster

for his service as SMG Vice President

Jena Hounshell

for her service as SMG Vice President, Newsletter

Jennifer Stenhouse

for her service as SMG Secretary

Roland Crawford

for his service as SMG Treasurer

Judy Kuskin

for her service as SMG Membership Director

Our Lifetime Achievement Awardee: Harold Balazs

Lynne Hull took the podium at our General Meeting in January at North Seattle Community College, offering the introduction to our Lifetime achievement awardee Harold Balazs. We'd like to share her wonderful intro of our beloved guest:

"I am honored to have the opportunity to introduce to you, the SMG's 2008 lifetime achievement award recipient Harold Balazs. I first meet Harold in 1990 at the enamel conference at Highline Community College. Harold was introducing the enamel community to tig welding. He created a copper rutabaga out of sheet metal and enameled it. As we all do, I fell in love with Harold that day and his views on making art, or, as he states 'making stuff'. His demonstration that day shaped my world of teaching.

Harold was born in Westlake, Ohio and received his BFA at Washington State University. Since graduation Harold has managed to make a living with his art. Harold knows no boundaries; he works large and small, in many mediums and is best known for his large scale public art. He was elected three times to the Washington State Arts Commission, received the Life Time Achievement Award from the enamellist society, honored by the American Institute of Architects and chosen as a living treasure by the Northwest Designer Craftsman Guild. You will find his public art all across the country, bringing wonder to the viewer.

In 2003 I asked Harold to come to North Seattle Community College and teach a workshop. His workshop was called



Lifetime Achievement Awardee: Harold Balazs

"Stencil to Image" and opened the students' eyes to the endless possibilities of enameling. At the workshop there was a student complaining about his work, not liking what he was creating. Harold gently took the piece out of his hand, placed it on the floor and proceeded to stomp on it until all the enamel was off. Then handed it back, saying, 'try again'.

That said; I introduce to you Harold Balazs."

Thank you , Lynne, for this wonderful introduction to Harold. And thank you, Harold, for a lifetime of fabulous art and inspiration.

2009 SMG Exhibition Updates

I will be signing the contract in February with EAF Museum for our show at the Frances Anderson Center. We will be using some of their showcases as well as two of Roland's. Remember, you must be a current member of SMG to participate in this show. We will be accepting up to two pieces of metal work per entry. We can take three free-standing works that have a maximum footprint of 20" x 20" and a height of 36", as well as some metal art pieces for hanging on the walls.

Entry forms will be posted on the SMG web site. For on-line submissions of the application, they must include: one picture of each piece submitted digitally (RGB jpegs at approximately 1024 x 768 pixels), your resume and paragraph for your artist statement. You can also bring a CD or DVD with this information to art drop off, if you don't know how to send

the information. If photographs are also beyond you, we will have a camera at the art drop off location. Art drop off will be at Pratt Fine Art Center on the weekend of September 5 and 6, times to be announced later. We want to make it easy for you to participate at all levels of craft art work.

As we get closer to submission dates, we will need other volunteers to help us gather work and make display mountings for the jewelry pieces. You can let me know if you would like to help with this. My e-mail is creationbykiraya@msn.com or call 206-363-8983.

Sincerely,
Kiraya Kestin

SMG Organization

What is this chart all about? Last year it became clear to the SMG board that the wide variety of events and services we facilitate each year are being managed by fewer and fewer people. Nearly every activity of the SMG, of late, has been planned, coordinated and hashed-out during board meetings rather than in “committee” meetings as originally intended by the founding members. In an effort to gain a better understanding of the big picture we grouped the events and services under headings that made sense to us and thus started to clarify where we really needed help.

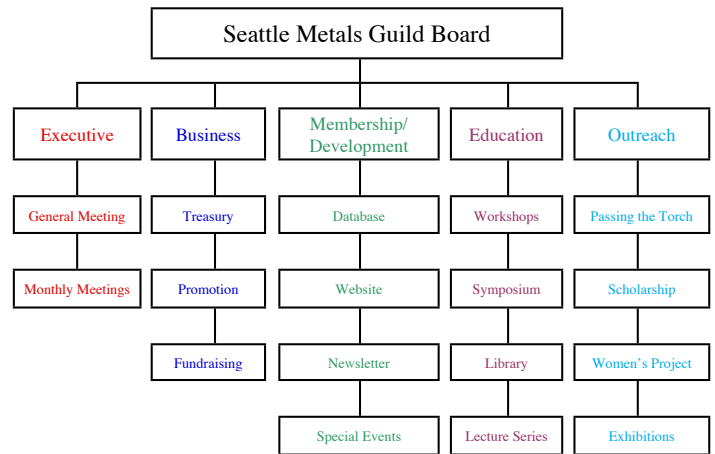
Staying in compliance with our bylaws we have elected to add three additional standing committees, the Membership/Development, Education and Outreach Committee, making a total of five standing committees. Standing committees operate year round and over-see the management of the subcommittees directly linked to their established focus. Subcommittees plan events and services as needed. Two board members are required to sit on each standing committee and ideally the chair of each standing committee is a board member. Subcommittees do not require a board member to be directly involved, however the chair of each subcommittee is responsible to report to the chair of the standing committee under whom they reside and vice-versa.

What does this mean? We hope this will create an easier flow of management allowing more members to get involved directly

with the events and services of the Seattle Metals Guild. Perhaps you would like to plan the ornament exchange party this year, or the studio tour, or the next set of workshops?

In the coming weeks the board will be contacting members who have expressed interest in volunteering. If you would like to get more involved contact membership@seattlemetalsguild.org.

Thank you!



Upcoming SMG Scholarship Deadlines

The Seattle Metals Guild has a suite of scholarships available for all levels of skill, from the newly matriculated student to the top level artisan looking for an educational experience or partnership on a new project. Scholarships deadlines revolve around the calendar so please refer to our website for descriptions and application details: www.seattlemetalsguild.com.

The following scholarships have an upcoming deadline of May 1, 2009:

- The Kris Williams Continued Educations Scholarship
- The Sharon Boardway Matriculated Student Grant
- The George McLean Specific Project Grant

Questions, comments and suggestions can be emailed to vicepresident@seattlemetalsguild.org.

Thank you.

SMG Necklace and the Pratt Auction

If it were not for the persistence of Owen Ken Hall, our tradition of donating a necklace of beads to the Pratt Fine Arts Center auction may have gone by the wayside. Transition in the Guild, as well as a pushed-up deadline at Pratt, contributed to the bead necklace nearly getting overlooked. However this destiny did not unfold. Perhaps it was years of habit, or simply a love for the project which led Mr. Hall to coax his email savvy wife to contact us several times with inquiries regarding his bead. Whatever the case, his wake up call made the difference. Thanks to everyone who contributed a bead and a very special thank you to Reed Schilbach for assembling the necklace on such short notice. More on the necklace next issue...

The 9th Northwest Biennial

January 31 - May 25, 2009

Please take the opportunity to head to the Tacoma Art Museum's Northwest Biennial show where you'll be able to see the works of Seattle Metals Guild members Sarah Hood and Micki Lippi. The show marketing materials indicate it "will focus on the current aesthetic and conceptual concerns addressed by regional artists. Through an increasingly complex matrix of influences, Northwest artists adapt and shed ideas, media, and imagery to define themselves as artists while reinventing or restating the core notion of a Northwest artist. Because the concept of 'regional art' continually collapses and rebuilds, the subtle shifts in the imagery, stylistic impulses, and conceptual foundations reveal how the region's artist community participates in the broad dialogue of contemporary art."

A 108-page catalogue which includes 71 full-color illustrations of works by participating artists along with essays by the curators is available. You can find it at the museum or online at www.tacomaartmuseum.org. The show is open until May 25th, 2009.

Selling on ETSY?

Are you successfully marketing yourself on ETSY or other online retail space? Want to share that experience with your fellow SMG members? If so, send an email to newsletter@seattlemetalsguild.org. We'd love to hear about what you're doing, how you're doing it, and what tips and tricks you can share with your fellow members.

While you're at it, check out Andy Cooperman's new web-zine articles on ETSY. Andy, in conjunction with Don Friedlich and Hariette Estel Berman, is offering up tips to ETSY Store Owners in a section called "Shop Makeovers Series: Gallery Go Getter". The trio helps to educate jewelry artists on the "ins and outs" of how to sell to galleries, linking to the Professional Development guidelines available on SNAG's website as well as an anticipated educational presentation at the upcoming SNAG conference. You can find this series at <http://www.etsy.com/storque/search/tags/gallery-go-getter/>

Mentoring Our Emerging Artists

by Cynthia Wood



Frederick Park, Micki Lippe and Julia Henscheid

Making it in the jewelry field is tough. Young artists come out of school with art training and technical skills but often not with the practical knowledge of how to maneuver within the business of jewelry. Experienced jewelry artist, Micki Lippe, had occasion to share such a conversation with a group of young artists late

in 2008. While volunteering for Seattle's Artist Trust Auction, the young artists took the opportunity to discuss with Lippe the 'ins and outs' of exhibitions and how difficult it was for beginners to get their works into shows.

Leap ahead to February 2009 and those same young artists are now featured with Lippe in their own exhibition at the Pacini Lubel Gallery in Seattle. It is opening night and Lippe is beaming with pride. What began as somewhat idle chatter and a coaching opportunity between an experienced artist and a group of young eager graduates had, a year later, developed into a full blown small group show, titled 4 + 1.

In response to the exhibition difficulties faced by the younger jewelers, Lippe came up with an idea. She thought that if she leveraged her reputation as an artist, proposed an exhibition of her work wrapped with a select group of younger jewelry artists, "a gallery might go for it."

It was not all smooth sailing. The initial gallery that was approached passed on the proposal. Yet Lippe persevered with the concept of a small group jewelry show and, on approaching the second gallery, Pacini Lubel, "Jerry Slipman and Rand Perez decided that they wanted to go forward with the concept."

Continued on page 6.

Continued from page 5.

Mentoring Our Emerging Artists

“My idea from the start was that this would be a somewhat casual arrangement between the five of us,” explained Lippe about her collaboration with the young artists. “Although I am not their teacher I wanted to facilitate their first small group show.”

Lippe, a noted jewelry artist (BFA, Washington University, St. Louis, MO.), creates unique one of a kind designs as well as a successful production line (www.looselyhinged.com). The other members of the 4 + 1 show include:

- Jennifer L. Bennett, MA, Antioch College, 2001
- Julia Henscheid, BFA Metals, University of Washington, 2006
- Frederick Park, BA, University of Washington, 2007
- Midori Saito, BFA Metals, University of Washington, 2007

Lippe is pleased with the outcome of the collaboration. “The show looks really wonderful.” All of the young artists accomplished their goal: each created a new body of work. “They now have images of that work and can approach other galleries. Using very different approaches and various materials, each of these artists has produced outstanding and innovative jewelry. I am extremely proud to be a participant in this exhibition.”

The group also decided to produce a catalog of the work in the show. As feedback to others considering a similar show, Lippe said, “it is very important to have documentation of an event like this.” Saito, who is also Lippe’s jewelry assistant, took lead in the effort of producing the self published catalog. The catalog process itself became a learning opportunity for the group, offering lasting printed credentials of their experience.

Frederick Park commented on Lippe and the efforts to make the Pacini Lubel show happen. “The experience that successful artists have gone through is invaluable. The years of knowledge that they share with you is something that you can’t read or learn about on your own. As an emerging artist, it’s a tough world out there. But to have a mature artist who you respect, believe in your work and abilities, and take time out of her schedule to help you improve....it means the world.”

“The experience of this show at the Pacini Lubel Gallery has caused me to think about what it means to be a mentor, or to be mentored,” shared Julia Henscheid. “The traditional concept of the mentor doesn’t always apply in contemporary situations: there are few true apprentice type situations anymore. What seems to be more common, and more realistic, is to keep a network of people around who you can turn to for support. We all are increasingly informed by a unique collection of formal and informal teachers.”

Jennifer Bennett concurred. “I think more than ever, we really need community support to help us be the best we can be.” She continued by saying, “Just knowing that I was not alone as I navigated and negotiated with a gallery made me feel

more empowered. The group dynamic certainly boosted my confidence in terms of valuing my own work in a healthy way, not just monetarily, but also in terms of appreciating the time involved it takes to create.”

Midori Saito added, “With Micki’s great assistance, I was able to have another perspective on my work and earn confidence to focus on the process of creating. Mentoring is not just providing the guidance of skills and knowledge but also introducing new opportunities.”

In general there are few formalized opportunities for emerging artists. Lippe pointed to the Sienna Gallery’s Emerging Artist Award, commenting that “they do a wonderful job. But there really aren’t enough opportunities for our young artists.” She continues, “I feel it’s really important for older recognized figures in the field to help mentor our younger artists, even if it’s only in a loose and casual way. The point is to mentor, in whatever way they find appropriate.” Lippe continued by stating, “I hope that other established artists will look into partnering with emerging artists and consider doing a show like this one. It’s really impactful any time an experienced artist can lend a hand to our younger artists.”

Perhaps more impactful than Lippe is aware. Jennifer Bennett confided, “I did not go to art school, so I have always wondered what I might have learned there. Everyone else in the group did, and most have their BFA’s in jewelry. I think being a part of a show with other people who self-identify as artists has helped me ‘get over’ the fact that I do not have an art degree. That I am an artist. There, I said it!”

An emerging artist indeed.

The 4 + 1 catalog is available from Pacini Lubel Gallery, Seattle, (206) 326-5555 and by contacting mickilippe@comcast.net



Frederick Park, Jennifer L. Bennett and Midori Saito

Women's Jewelry Shelter Project

By Ellen Lyons

Surrounded by a sea of lockets, earrings and pendants, ten Seattle women sorted, cleaned and recently reinvented an eclectic pile of donated jewelry into wearable pieces of art. The event took place Sunday, January 18th at Danaca Design, a destination gallery and metalsmithing school in the U-District of Seattle. The women, all members of the Seattle Metals Guild and/or working artists, combined their innumerable talents to reinvent the jewelry into pieces ultimately gifted to area shelters for abused and battered women as part of the Seattle Women's Jewelry Shelter Project.

The founder of The Women's Jewelry Shelter Project is Micki Lippe, a Seattle metalsmith, educator and the maven of the group. For Micki, "one of the best parts of this project for me is coming across a nice pendant and then finding just the right chain for it."

And finding treasures known and unknown is part of the process as well.

When we find a treasure such as a gold diamond pave heart, we put this on E-bay and then use the proceeds to help shelters and agencies provide more services.

For Helene Furchman-Gold the best part was "digging through the piles of donated jewelry and helping recreate them into new "works of art." To assist her creative muse, Ms. Furchman-Gold "envisioned the poor or abused women I worked with every day and how much a small piece of beautiful jewelry could do for their lives." She went on to say, "I have worked with the domestic violence and poverty community for many years...and I know from direct experience how much having a stylish new piece of jewelry will do to give these women a happy moment, and may even empower them."

Upcoming SMG Lecture Series

March 12: Lauren Grossman

Whithersoever: an Artist's Take on Western Culture

Lauren Grossman shows her work combining cast, found, and fabricated metals with a host of other media – from porcelain to propane to insect-filled fibreglass.

April 9: Samia Shalabi

Journeys to India: Goldsmithing; a Tradition, Culture, and Art

Samia Shalabi spends 2-3 months each year in Southern India studying, working and learning the Indian art of goldsmithing from 2 small independent master goldsmiths and artisans. She will share some of her extraordinary experiences and bring along some of what they have made.

Empowering others less fortunate in a global time of economic, psychological and social need was very rewarding for all of us, especially Julia Lowther. Julia described her childhood experiences growing up as a Quaker with the tenet "live simply so that others may simply live." In this rural upbringing, one "can't take resources for granted because it's hard to get them." That said, they get washed out and reused or if broken, they get fixed, which is exactly what the group did on January 18th with a committed purpose and heartwarming camaraderie! For the women who volunteer with the Women's Jewelry Shelter Project, we provide a cleaned and repaired piece of jewelry. In doing so, we honor not only the recipients, but the human connection between us. The jewelry gets a new lease on life and does not end up in a landfill.

A broken chain is easily repaired with a new jump ring. It is embellished with a pendant made from an orphaned earring. It might go on to celebrate a birthday, a new job, or Mother's Day, or maybe it is worn in a job interview that will enable an abused woman to start a life of her own.

The Women's Jewelry Shelter Project is always seeking donations and volunteers with or without experience to clean, sort and repair. To volunteer, please contact Micki Lippe at mickilippe@comcast.net or Ellen Lyons at ellenlyonsdesigns@hotmail.com. The next cleaning and sorting day will take place on March 15th.



SMG Ornament Party

Many, many thanks to Kiraya Kestin and family for hosting the annual ornament exchange in their cozy home. We had a great turn out of old and new faces as about 40 people showed up, with fabulous hand crafted ornaments to exchange. Lots of creativity was on display! If you haven't been to an ornament exchange in a while or have never had the opportunity to join us, do plan on putting this year's party on your calendar. In that it's our 20th Anniversary it will prove to be a special event.

2009 "Passing the Torch"

by Lynne Hull

This New Year brings lots of hope and change for our country. It is also a time for SMG members to renew their membership and become more involved in all the activities and events the Guild provides. The Guild is only what its membership makes of it.

As the SMG's mission states, we are a non-profit organization made up of people with varying interests and involvement in traditional and contemporary jewelry and metal arts. We were founded on the notion of the free exchange of ideas/techniques as well as promoting an understanding of our field.

There is no better event than the "Passing the Torch" exhibition to fulfill our educational outreach goals. As our membership continues to grow older, David Gackenback and Nancy Worden established this outreach program that goes directly after our next generation of Metalsmiths.

In 2003, the Seattle Metals Guild sponsored the first "Passing the Torch" exhibition. High school students were encouraged to participate in metal related classes and challenge themselves to create exhibition quality work.

With the educational system demanding more science and technology, all the arts have suffered. Organizations like ours have to reach out, support the schools and create ways to sustain our craft.

Last year, I had the privilege of chairing the "Passing the Torch" committee and found it to be a tremendous amount of work but very rewarding. Once the exhibition was installed and all of the students had arrived for the award ceremony, I realized how important this event is.

Jewelry and metal arts students from public and private high schools across the state of Washington worked tirelessly to

fabricate and/or cast fantastic artwork. All the pieces were created in an Art, Jewelry, Metal Shop or Material Science class.

North Seattle Community College is proud to host this year's exhibition. The show will run from April 14th through May 1st. The award ceremony will be held on April 18th at 4pm. We have included an open house of the Art department at North from 2-4pm, and the SMG Swap Meet will also be held on campus that day during the open house hours.

Please come spend the afternoon visiting the studios, viewing demonstrations, swapping tools and celebrate the high school students being honored for their effort and hard work.

If you have not been to one of the award ceremonies, I highly recommend that you put it on your calendar. For those of you who have attended in the past, there is no need for encouragement.

It really is a remarkable day when the high school students from around the state gather and get a chance to see their work displayed under glass and in a gallery setting. Most importantly, they are publicly recognized for their artistic talent and resulting products.

To make it an eventful day for all the students, parents, teachers and guild members, the open house will include hands-on metalsmithing demonstrations from John Caster, Phil Baldwin and Lynne Hull.

The swap meet will offer the opportunity for all to look for tools/supplies and of course purchase some of Phil Baldwin's mokume gane metal. Open Studios and swap meet will be 2-4pm.

Please spread the word, invite someone outside of our field to come to this noteworthy event. You will see amazing student work and experience their passion for metalwork. Most of all, you will see first-hand how dedicated and involved the Washington state high school teachers are in keeping metalsmithing alive.

My hat goes off to all of them!!!!

Reviews



Lecture by Chris McMullen

by Kirk Lang

I was thrilled to hear that the Seattle Metals Guild had chosen Chris McMullen, a kinetic sculptor, to kick off this year's Lecture Series. Interestingly enough and completely coincidentally, a friend had introduced me to Chris's work just a few weeks prior as "a guy who has been doing some pretty interesting kinetic stuff around town." Being a kinetic sculptor myself, I was excited to hear Chris share his thoughts at Seattle Pacific University on January 8th.

What initially struck me about Chris was his ability to deliver his words in a seemingly comfortable and informal manner. He made it easy for me to fully engage in his presentation and value his sculpture for what it truly is... absurd. Not only absurd in the functioning, but also in its creation and in some cases its deconstruction. For instance, his Burning Man project entitled *The Machine*, measured a ridiculous 56' x 78' x 78', was constructed over a number of months, employed the labor of countless craftsmen and called for a rather lengthy transport to

the Black Rock Desert in Nevada where it ran for a single week, only to be dismantled by numerous rope tugging participants and explosives, yes... explosives.

In addition to his epic Burning Man creation, Chris also talked about both his gallery and public work. As his portfolio unfolded, I became increasingly impressed with his Rube Goldberg-like creations. I found it intriguing how his gallery and public work related in particular. Although they both shared Chris's mechanical aesthetic, his gallery work seemed decidedly more ironic, focusing on elaborate contraptions that performed the simplest of tasks. His public work on the other hand had no visible function other than the movement itself, often times resembling the inner workings of a V-8 engine as in his piece entitled *Leverage*. What I found most compelling about his outdoor work was that it required more than one participant to activate. Not only that, the more participants, the easier and more rapidly the components of the machine would oscillate, creating a cacophony of moving metal.

Overall, I felt the talk was interesting and informative throughout. My only complaint is that I wish he would have brought more toys to play with. In addition to Chris, I want to thank the Seattle Metals Guild for reaching out and hosting the event, and in doing so, broadening the scope of the SMG Lecture Series.

4+1: Jewelry

Exhibition at Pacini Lubel Gallery
Seattle, Washington
February 5- February 28, 2009

by Susanne Lechler Osborn



The group of five: Jennifer Bennett, Julia Henscheid, Micki Lippe, Frederick Park and Midori Saito produced an outstanding and impressive body of work that was on display at Pacini Lubel from February 5 through Feb. 28, 2009.

Like with most contemporary art jewelry there was no restriction on materials or techniques. Exploration of materials and ideas were paramount and the value of the material was secondary.



Jennifer Bennett (*Hajur Ama Necklace*)

Jennifer combines the wispy flow of angelina fiber, muslin and silk threads with planar mica and metal. She strives for an equilibrium in space and mass and succeeds. Her time in Nepal led to an interest in the balance and focus of our life energy and her pieces reflect life's dichotomies in a harmonious way.

Julia Henscheid (*Oo Ring*)

Julia combines precious stones and gold with resin as a way to challenge our ideas on what makes jewelry valuable. She uses pigments in resin to mimic the color of the precious material and in doing so she searches the border between the natural and man-made, the authentic and artificial.



To what extent is it possible to measure value? Are conventional materials such as gold and diamonds really more valuable than others? What makes them more valuable?

Micki Lippe (*Charmed Necklace*)

Micki was originally a fiber artist who used thread as her medium. Then she became a metalsmith and no longer needed thread to hold things together. In her current work, Micki returns to her roots and places diminutive metal memories within a fiber and bead mélange. She states that these pieces are either representative of items she found or might find on her walks in the woods. Her threads are often left at loose ends, and like her mentoring they represent connections that were nurtured and then set free.



Freddie Park (*Tease Pendant*)

Freddie uses the tagua nut as a renewable resource that has been used to replace ivory. Like ivory the nut absorbs colors, pigments and in one even Merlot. Through the process of subtraction, i.e. carving by hand or the flex shaft, he is able to produce a range of forms and textures. Applying his background

in biology and his sculptural vision, he starts with a simple totipotent seed and ends up with an abstract organism or refined fruiting body.

Midori Saito (*Shed Necklace*)

Midori uses tissue paper, coffee filter paper and resin to create natural pieces of organized structure that have sculptural qualities. Some of her pieces play on the tension between the primitive and the refined. Evolution is happening to find the most stable form and in doing so beauty is created.



So thanks to Micki and her mentoring and all the 4+1 artists who made the Pacini Lubel show an art jewelry event worth attending. We wish everyone the best of luck with their future endeavors and we shall stay tuned.

Holloware/Metalsmithing Course

A **"Small Scale Metal Sculpture"** class is being offered this spring quarter at North Seattle Community College. Lynne Hull will be teaching Holloware and sheet metal techniques focusing on objects for use.

For more information Contact Lynne at lhull@sccd.ctc.edu or www.northseattle.edu for class description and schedule.

Lark Books is...

...looking for jewelry pieces that mix metals – silver, gold, copper, iron, bronze, aluminum, etc. – in interesting and creative ways. Combinations of all forms of metal, such as sheet, wire, clay, and recycled materials, are welcome, as are all techniques. Book to be published April 2010. Deadline is March 16, 2009. Entry Forms and guidelines at www.larkbooks.com/submissions/artist-submissions

SNAG 40th Anniversary Apron

There will be a limited edition shop apron created to help celebrate SNAG's 40th Anniversary. The aprons will go on sale at the 40th annual conference, in Philadelphia on May 20, 2009. The 40th Anniversary Committee is holding a contest to find the artwork to grace this limited edition apron. The contest is open to any student (full or part time) in any metals program in North America. (This means you or your students!) The winning design and designer will be featured in an announcement in *Metalsmith*. Not to mention bragging rights, and a free apron, courtesy of the anniversary committee. If you want to see your artwork on everybody else's apron, now's your chance.

Final designs due via email March 16, 2009. Email address: snag@alberic.net

The full rules as well as template files for the apron and logo are available via the SNAG website at this address: www.snagmetalsmith.org/docs/pg/10197

NW Bead Society Lectures

The NW Bead Society meets the 3rd Thursday of each month at 7pm (except July and Aug) at the Greenwood Masonic Lodge, 7910 Greenwood Ave N, in Seattle. For details visit www.nwbeadsociety.org

March 19th – Sara Wilbanks

Polymer clay is a new medium that Sara Wilbanks has transformed into a jewel to be set in precious metals. Phototransfers onto the clay form the basis of her artistic lexicon. A graduate of the Art Institute of Chicago, Sara has been featured in Lark Books' 500 Earrings and was awarded an Artist Trust 2004 Edge Professional Development Program award.

April 16th – Tina Koyama

In early 2003, Tina left a 20-year career in corporate communications to make more time for art. She has had dozens of jewelry designs and other beadwork published in *Beadwork*, *Bead & Button*, and *Belle Armoire* among others. Tina uses needle and thread with a variety of materials to create self-supported, three-dimensional forms that evoke movement and energy. Her latest body of work involves hand-stitching, single, continuous piece of hand-dyed, ordinary cotton rope into free-standing forms. The technique is self-taught. Tina says of her work, "Regardless of medium, what excites me about working in three dimensions is exploring the relationship between negative and positive space. As with words left unspoken, a tension develops between a hole and the physical material pressing against it. I am compelled to reveal this tension and transform commonplace materials into unexpected shapes."

Women's Jewelry Association Scholarship

The Women's Jewelry Association would like to invite you and your students to apply for the 2009-2010 Student Scholarship. WJA is committed to empowering women in the international jewelry, watch and related businesses. We are offering Scholarships to female students

enrolled in accredited fine jewelry and watch design courses in the United States of America. Last year we gave out \$25,000 in scholarships to 14 deserving students. This year we are awarding scholarships in two different categories: the Designer Category (based on images of finished pieces that are designed and created by the student), and a Non-Designer Category (essay based for those studying to be a gemologist, appraiser, watch-maker, bench jeweler, or retailer).

All applications are on-line applications and can be accessed through www.callforentry.org.

If you have any questions, please e-mail Lisa Slovis Mandel at lisa@lisslovis.com, or call WJA headquarters at 708-361-6000. For more information on WJA please check out our website at www.womensjewelry.org.

Deadline is May 1, 2009

SNAG Educational Endowment Scholarship

Application deadline is approaching. The current application, with instructions, is available on the website. Look under Programs/Resources. The postmark deadline for applications for this scholarship is the March 13th 2009. SNAG encourages any matriculating students who will be enrolled in the 2009-2010 school years to apply. Please visit the SNAG website www.snagmetalsmith.org for further details.

The Bay Area Metal Arts Guild Grant

(MAG) will award a \$500 grant to a full-time, matriculated student showing excellence, potential, and talent in the metal arts. The winner will be given a feature article in an upcoming issue of the MAG Guildletter. Student can reside anywhere in the United States.

ELIGIBILITY – Applicant must be a full-time, matriculated student in metalsmithing program. Must be a member of MAG or sign up for a student membership (\$20)

DEADLINE – Entries must be postmarked by APRIL 30, 2009. For more info and to download an Entry Form, go to www.metalartsguilds.org/events/grant.htm

Pratt Fine Arts Center....

Is testing a new on-line class registration system. You can browse classes, register for them, and know right away if you have been successfully enrolled. How cool is that? See for yourself... www.pratt.org

MEMBERSHIP FORM

Today's Date _____ New Member Renewing Member Check if contact info has changed

Name _____ Organization (If applicable) _____

Address _____

City _____ State _____ Zip _____ Country _____

Home Phone _____ Cell Phone _____ Work Phone _____

Email _____ Fax _____

Check if you do NOT want your address or phone published in the SMG directory

Check the box only if you want to receive a paper copy of the newsletter in addition to the electronic version
(Help the guild save money and resources by viewing your newsletter online. You will receive email notification when each newsletter is available.)

Enclosed is: \$45 Individual membership (1/1/2009 – 12/31/2009) \$20 Student w/copy of student ID
 \$60 Membership for any number of adults at same address (1/1/2009 – 12/31/2009)
*Membership runs for the calendar year, **January 1 – December 31, 2009**. Memberships **paid on or before** October 31, 2009 **will end** December 31, 2009. Memberships **paid** November 1, 2009 – December 31, 2009 **will extend** through December 31, 2010.*

I can help with: Newsletter Mailings Bead Necklace Exhibits Workshops and Events
 Symposium Educational Outreach Misc. – Call me for specific tasks as needed

Other skills I can offer to SMG: _____

Send checks payable to Seattle Metals Guild, PO Box 70407, Seattle, WA 98127
Please allow up to four weeks for processing of your membership. If you have not received confirmation within four weeks, please contact membership@seattlemetalsguild.org.

Market Place

WANTED

I am looking for a used rolling mill with these specifications: minimum 90 mm flat rollers (preferably 100mm) with a reduction gear, for no more than \$600.

My email is bunnyhuggins@gmail.com and my cell is 541-968-1825. Ask for Robin.

FOR SALE

Centrifugal caster, Kerr 6/4 with all the flasks and everything to go with it. It is complete and built into a steel frame with a table top. Asking \$1500.00. Located on Camano Island. Best way to contact me is email. sall@sos.net
 My name is Sall.

SEEKING STUDIO ASSISTANT

Established Seattle area jewelry artist is seeking a part-time studio assistant. Some experience at fabrication and stone setting is required, plus a willingness to do computer, office and other work. If interested, please contact Nancy Worden at rajbeet@mac.com.

FREE TO A GOOD HOME

Do you need a source of pure mercury? I have a fair quantity, free for the asking. Located in the Green Lake Area.

Contact jandjacoburn@aol.com or call (206) 595-6062. Ask for Jeff.

Continued from cover

Passing the Torch 2008 Winners:

Jewelry Category

- 1st.Chelsea Wood.....Plusiotis Aurigans
- 2nd.....Sergey GodunokGlass enameled dome
- 3rd Liran Schleckser.....Tiara of Leaves

Honorable Mention

- Steven Singh.....Forest of Life
- Chris HashimCracked Shield
- James CarrollJorge

Sculpture/Holloware Category

- 1st.Brandon Forgie.....United Patriot
- 2nd.....Jeremy HatfieldTwo Parts of Luck
- 3rdMichelle Brant.....Suspended in Balance

Honorable Mention

- Joel Boggs.....Medieval Metal
- Gerald Burke.....Ode to Blossfeldt
- Katherynn EnloeTwilight

2009-2010 SMG Board of Directors

All addresses are suffixed with "@seattlemetalsguild.org"

President	John Caster	president@	
Vice President	ET Kessler	vicepresident@	
Secretary	Jessie Wylie	secretary@	
Treasurer	Camille Keyes	206-856-5918	treasurer@
General Board	Aaron Barr	board2@	
General Board	Dana Cassara	board3@	
General Board	Kiraya Kestin	board6@	
General Board	Lotta Gustafsson	board8@	

SMG Services

Newsletter Editor	Cynthia Wood	newsletter@
Library	Jonathan Tindall	librarian@
Symposium Coordinator	Candace Beardslee	symposium@
Workshop Coordinator	Dana Cassara	workshop@
Membership	Dana Cassara	membership@



The Seattle Metals Guild is a non-profit organization made up of people with varying interests and involvement in traditional and contemporary jewelry and metal arts.

The Guild was founded in 1989 to provide for the exchange of ideas and information, as well as to offer affordable educational opportunities to its members and the public.

Our activities include: a web site, bimonthly newsletter, exhibitions and a series of aesthetic, technical and business workshops and lectures.

The skills, energy and enthusiasm of the Seattle Metals Guild members promote and sustain its successful programs.

We welcome new members and encourage participation by everyone.

The Seattle Metals Guild Newsletter is published bimonthly. Comments, announcements and ads are welcome from all SMG members.

Please contribute to your Newsletter

We encourage participation and welcome information about upcoming shows and events, articles about safety and bench tips you would like to share. If you have comments or something to contribute, please submit your information, generated in a word processing program, via e-mail. Include photos or logo artwork in JPEG format, if available. Remember to provide who, what, when, where, why and how.

Cynthia Wood: newsletter@seattlemetalsguild.org

Deadline for May/June is April 10. Articles received after that date may be published in the following newsletter.

www.seattlemetalsguild.org

March/April 2009
Printing provided by Jon Tindall,
of Jewelry Resource and Supply.

P O Box 70407
Seattle, WA 98127

